

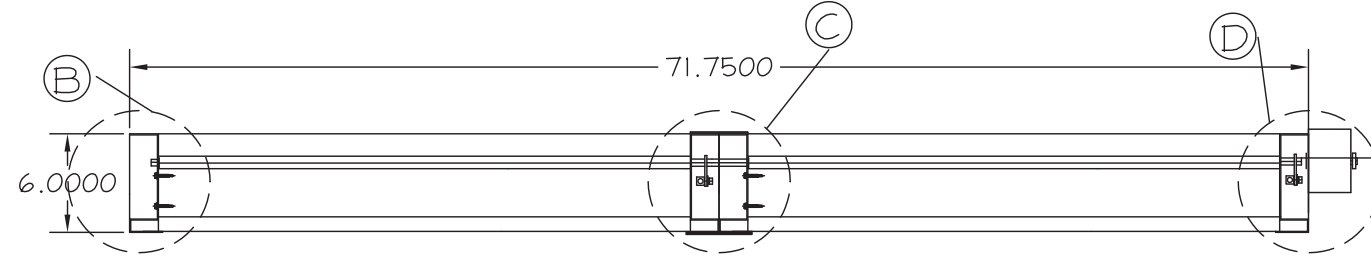
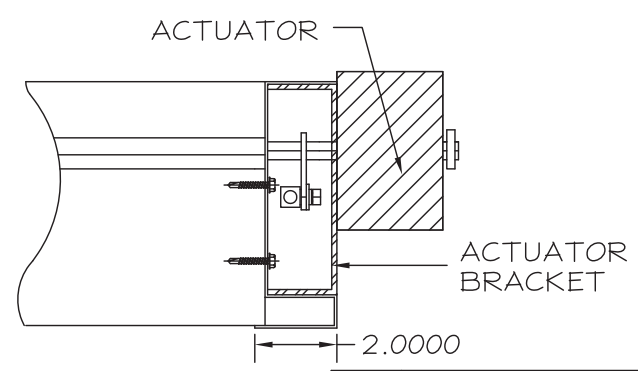
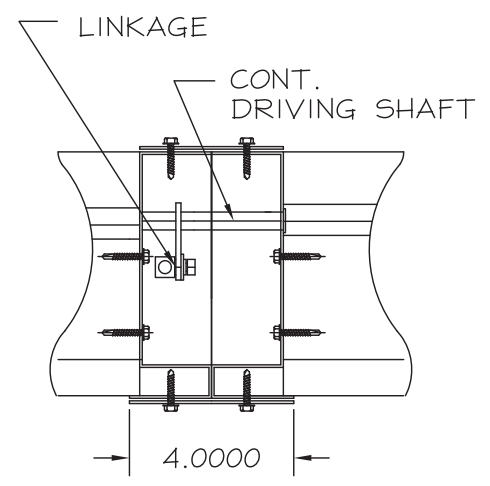
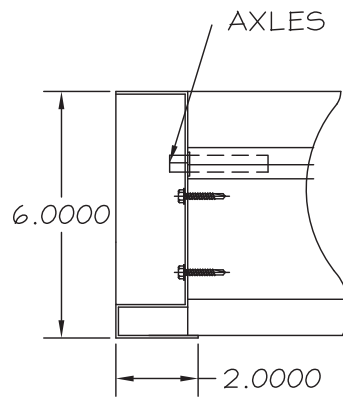
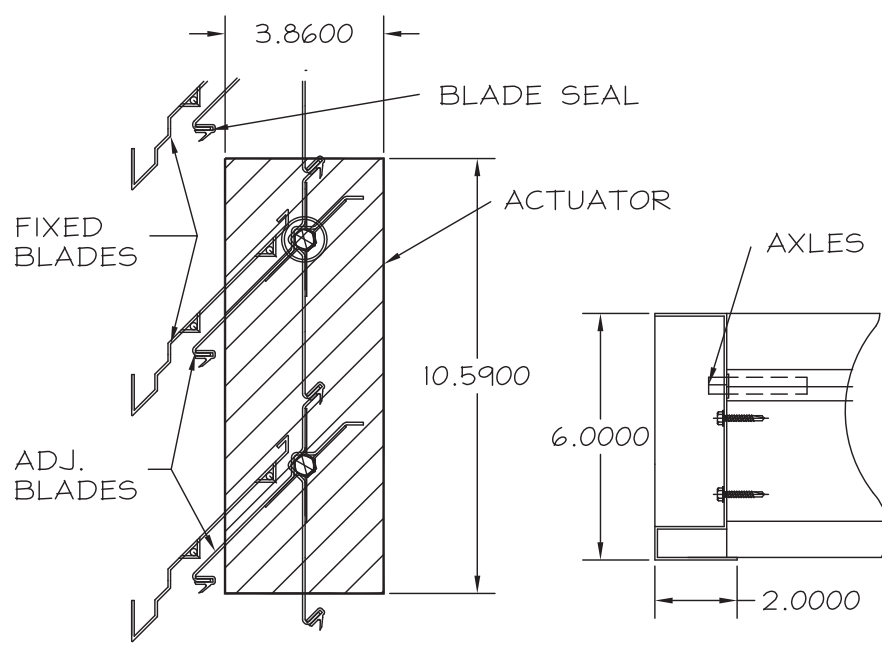
STANDARD ONSTRUCTION

MODEL: C-DWF-46/SERIES
 FRAME: 16 GA. GALV. STEEL
 FIXED AND ADJUSTABLE BLADES: 18 GA. GALV. STEEL
 BEARINGS: SSTL. 1/2" DIA. PRESSED SLEEVE
 AXLES: 7/16" (STUB SHAFT) PLATED STEEL HEX
 LINKAGE: PLATED STEEL CONCEALED INSIDE OF THE JAMB
 SEALS: VINYL BLADE EDGE AND FLEX ALUM JAMB SEAL
 FINISH: MILL
 OPERATOR: BELIMO MOTOR AF 24-SR-US

NOTES:

1. SIZES SHOWN ARE ACTUAL, OPENINGS MUST BE LARGER BY 1/4" OR MORE THAN THE LOUVER SIZE.
2. LOUVERS SHALL BE SUPPORTED AT EVERY 24" OC. BY MOUNTING CLIPS (SUPPLIED BY OTHERS) OR APPROVED EQUAL.
3. LOCATION OF ACTUATOR MAY SLIGHTLY VARY, PLEASE PROVIDE TOLERANCE IN THE FIELD.
4. ALL LOUVERS TO BE CAULKED BY OTHERS IN THE FIELD (NO SILICONE MATERIAL)

16 GA. MULLION STRIP 4" X FULL HEIGHT TYP. FRONT AND BACK



DOWCO DEPENDABLE PRODUCTS SINCE 1955
 1855 SOUTH 54TH AVENUE, CICERO, IL. 60650

ARCH/ENGR:		CUSTOMER:	
PROJECT:		TITLE: C-DWF-46 SERIES	
DATE:		DRAWN:	
		CHKD:	
DRWG #:			

REV.	DESCRIPTION	DATE	BY