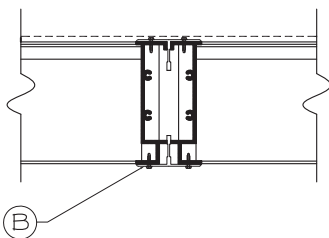
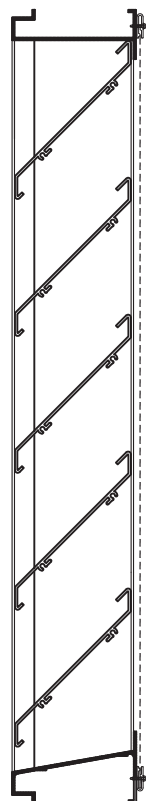


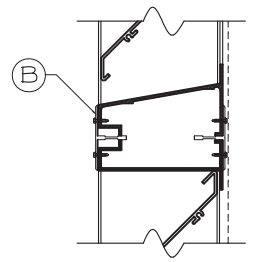
STANDARD CONSTRUCTION

MODEL: LEC-04-300T-D
 FRAME: .081" THK. EXTRUDED ALUM. 6063-T5
 BLADES: .081" THK. EXTRUDED ALUM. 6063-T5
 FASTENERS: #10-16 X 1" PLTD. STL. TEK SCREW
 SCREEN: .050 X 3/4" EXPANDED ALUMINUM SCREEN
 FINISH: MILL

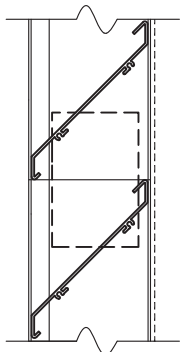
NOTES
 1. ALL LOUVERS TO BE FABRICATED 1/4" UNDER LISTED OPNG. SIZES UNLESS SPECIFIED "ACTUAL"
 2. ALL OPNG SIZES TO BE FIELD VERIFIED AND GUARANTEED BY OTHERS PRIOR TO FABRICATION.
 3. OTHER SURROUNDING FINISHES ARE FOR REFERENCES ONLY AND TO BE SUPPLIED BY OTHERS.



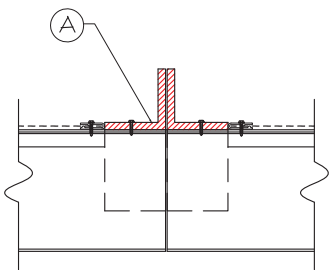
VERTICAL VISIBLE MULLION



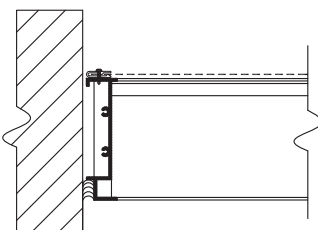
HORIZONTAL VISIBLE MULLION



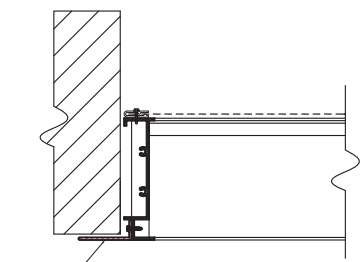
HORIZONTAL INVISIBLE MULLION



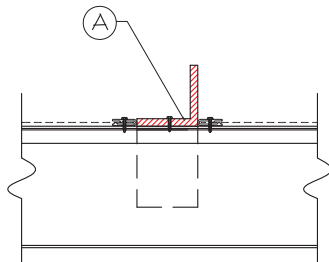
VERTICAL INVISIBLE MULLION



BOX FRAME




FLANGE FRAME



CONTINUOUS BLADE

- (A) 2"x2"x1/4" ALUMINUM ANGLE SUPPORT W/ BLADE BRACE
- (B) 2-1/8" TYPICAL T-MULLION
- (C) 1-1/2" FLANGE

| | | | |
|---|--|--------------------------------|--|
|  | | DEPENDABLE PRODUCTS SINCE 1985 | |
| 1855 SOUTH 54TH AVENUE, CICERO, IL. 60650 | | CUSTOMER: | |
| ARCH/ENGR: | | PROJECT: | |
| DATE: | | TITLE: | |
| SCALE: 1:1 | | LEC-04/SERIES | |
| DRAWN: | | DRWG #: | |
| CHKD: | | DATE: | |
| REV. | | DESCRIPTION | |
| DATE | | BY | |

| REV. | DESCRIPTION | DATE | BY |
|------|-------------|------|----|
| | | | |