

Aluminum Grilles (Colossia) - Model GBF-20 Series

STANDARD CONSTRUCTION

PERIMETER FRAME

1" x 1" x .095" extruded aluminum tubes, alloy 6063-T52

INTERNAL WEB TUBES

1" x 1" x .095" extruded aluminum tubes, alloy 6063-T52

RIBBON PLATES

4" x 4" x 1/8" (5005-H34) aluminum

MAXIMUM OPENING SIZE

Unlimited, structural bracing supplied by others

MAXIMUM SINGLE SECTION SIZE

120"W x 84"H or vice versa

MINIMUM SINGLE SECTION SIZE

12"W x 12"H

FASTENERS

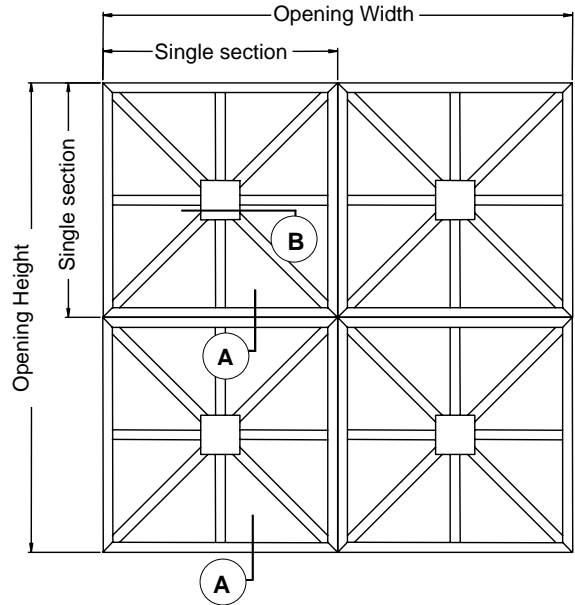
Welded construction

UNDERSIZED

1/4" under ordered size unless specified Exact or Actual

FINISH

Mill



FRONT ELEVATION

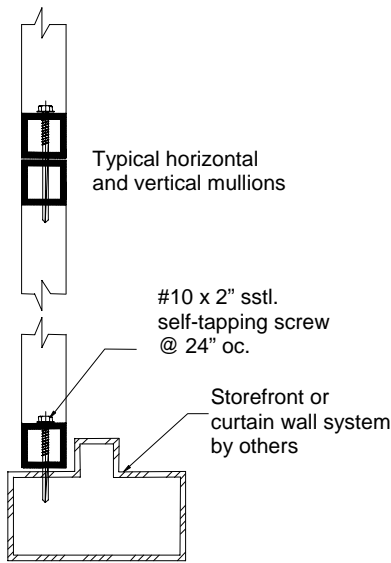
OPTIONAL CONSTRUCTION

PERIMETER FRAME & INTERNAL TUBES – 2" x 2" to 6" x 6" tubes

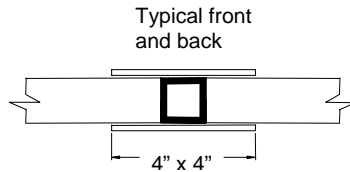
RIBBON PLATES – Square, round, or special shapes

SCREEN – Many styles available please consult screen listing

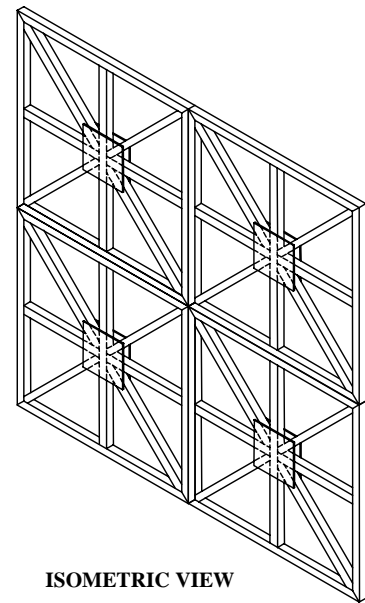
FINISH – Air-dry primer, polyurethane, epoxy, or enamel, baked epoxy or enamel, Anodized, Kynar 500, or Powder coat.



SECTION - A



SECTION - B
Ribbon Plates



ISOMETRIC VIEW

DATE	ARCHITECT			CUSTOMER
PROJECT				
ITEM	QTY	W	H	DESCRIPTION