

## Architectural Vertical Blade Enclosure - Model GSE-35 series

**Design Features:** Low cost vision proof design that provides shading, privacy and security. Attractive concealment of cooling towers, mechanical equipment and parking structures.

### STANDARD CONSTRUCTION

**BLADES**

2 parts blade, .063" extruded aluminum alloy 6063-T5, vertical blade arrangement 2" minimum to 2-1/2" maximum blade spacing, 2" deep

**SUPPORTS:**

2" x 2" x 1/4" extruded aluminum angle alloy 6063-T5

**FASTENERS:**

5/16" dia. x 1" plated steel bolts, nuts and lock-washers

**MAXIMUM SIZE**

Unlimited, structural bracing supplied by others

**MAXIMUM FACTORY ASSEMBLY SIZE**

60" x 120" or vice versa

**MINIMUM SIZE**

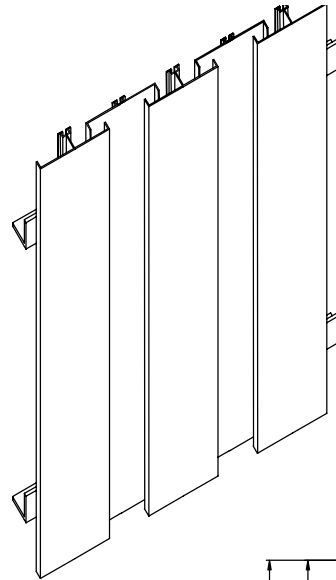
12" x 12"

**UNDERSIZED**

1/4" under ordered size unless specified Exact or Actual

**FINISH**

Mill



Steel supports horizontal or vertical by others

### OPTIONAL CONSTRUCTION

**SUPPORTS** – Available in heavier aluminum gauge and steel

**FASTENERS** – Available in stainless steel

**FINISH** – Air-dry primer, polyurethane, epoxy, or enamel, baked epoxy or enamel, Anodized, Kynar, or Powder coat.

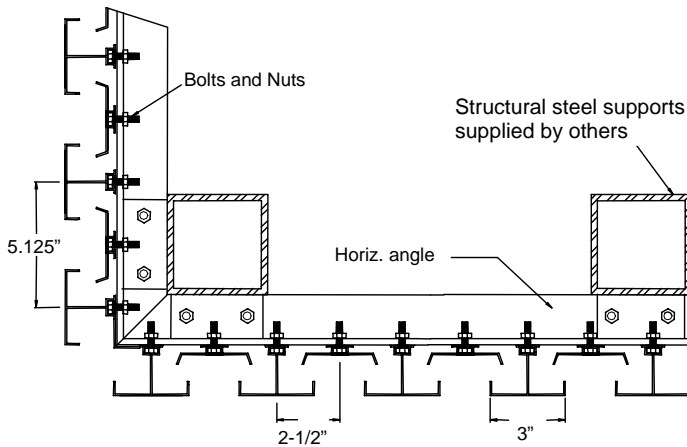
### SPECIAL PURPOSE CONSTRUCTION

Special shapes: Triangle, Round, Trapezoid, etc.

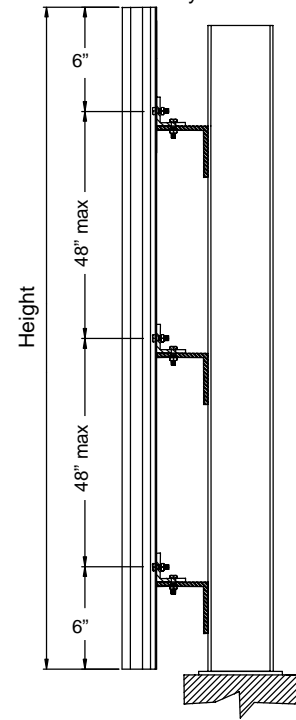
Fully welded construction

Hinged as walk through door or swing out access

Free Area (48" x 48") unit  
25%



**PLAN VIEW**



**VERTICAL SECTION**

DATE	ARCHITECT	CUSTOMER		
PROJECT				
ITEM	QTY	W	H	DESCRIPTION



DEPENDABLE PRODUCTS SINCE 1955

**SAFE-AIR/DOWCO**

*Engineering and General Offices*

1855 South 54<sup>th</sup> Avenue, Cicero, Illinois 60804

Phone 708-652-9100 FAX 708-652-9158