

Architectural Vertical Blade Enclosure - Model GSE-45 series

Design Features: Low cost design that provides shading, privacy and security. Attractive enclosure for cooling towers, mechanical equipment and parking structures.

STANDARD CONSTRUCTION

BLADES

1 part blade, .063" extruded aluminum alloy 6063-T5,
vertical blade arrangement 3-1/8" minimum to 4-1/8" maximum
blade spacing, 3/4" deep

SUPPORTS:

2" x 2" x 1/4" extruded aluminum angle alloy 6063-T5

FASTENERS:

5/16" dia. x 1" plated steel bolts, nuts and lock-washers

MAXIMUM SIZE

Unlimited, structural bracing supplied by others

MAXIMUM FACTORY ASSEMBLY SIZE

60" x 120" or vice versa

MINIMUM SIZE

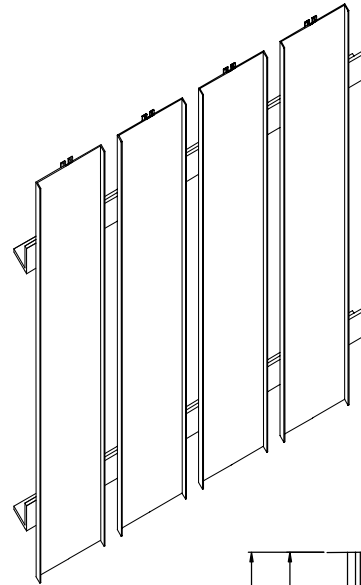
12" x 12"

UNDERSIZED

1/4" under ordered size unless specified Exact or Actual

FINISH

Mill



OPTIONAL CONSTRUCTION

SUPPORTS – Available in heavier aluminum gauge and steel

FASTENERS – Available in stainless steel

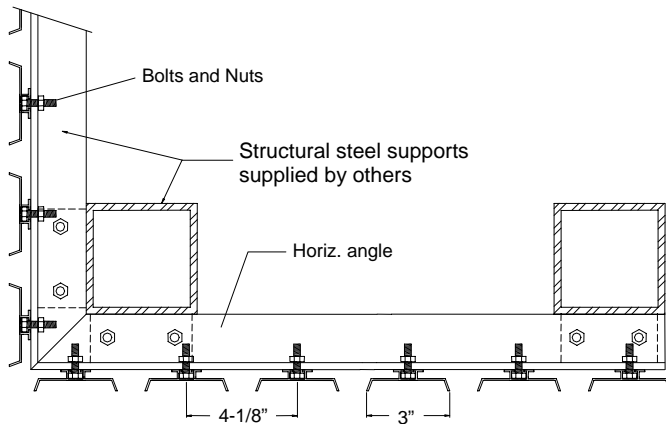
FINISH – Air-dry primer, polyurethane, epoxy, or enamel, baked epoxy or enamel, Anodized, Kynar, or Powder coat.

SPECIAL PURPOSE CONSTRUCTION

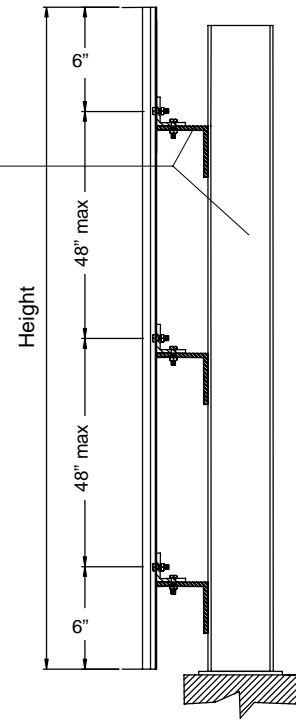
Special shapes: Triangle, Round, Trapezoid, etc.
Fully welded construction
Hinged as walk through door or swing out access

Steel supports
horizontal or vertical
by others

Free Area (48" x 48") unit
25%



PLAN VIEW



VERTICAL SECTION

DATE	ARCHITECT			CUSTOMER
PROJECT				
ITEM	QTY	W	H	DESCRIPTION