

**PENTHOUSES - EXTRUDED ALUMINUM (P-series & M-series)**

**Design Features** – Penthouses may be utilized as an attractive concealment of mechanical equipments and offer excellent air intake or relief while providing protection from outside elements. For storm-driven rain protection, a wind-drain rain louvers may be used.

**STANDARD CONSTRUCTION**

ALL MATERIAL – EXTRUDED ALUMINUM 6063-T5 (KB-45)

**FRAME**

.081" thk. extruded aluminum (see frame styles)

**BLADES**

.081" thk. extruded aluminum, (see blade styles)

**ROOF**

.063" formed aluminum (5005-H34), undercoated with black tar for anti-condensation

**LOUVER AND ROOF SUPPORTS**

Aluminum angles designed for (25) psf wind load. Consult Safe-Air/Dowco engineers for heavier loads.

**FASTENERS**

Plated steel screws

**MAXIMUM SIZE**

Unlimited, to be shipped in pre-assembled sections

**MAXIMUM FACTORY ASSEMBLY SIZE**

120"L x 84"W x 84"H

(Type of finish may limit maximum sizes)

**MULLION**

Invisible

**MINIMUM SIZE**

12"L x 12"W x 12"H

**UNDERSIZED**

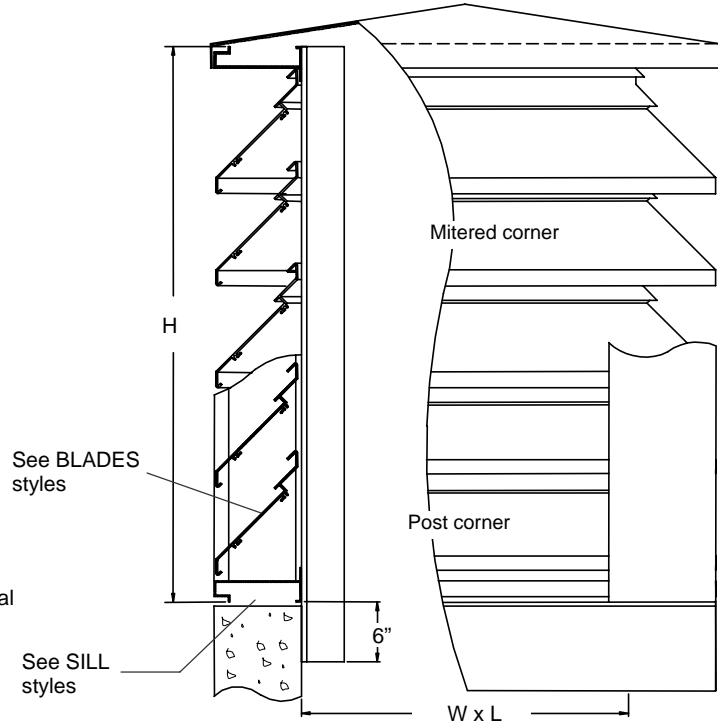
1/4" under ordered size unless specified Exact or Actual

**SCREEN**

3/4" x .051" expanded aluminum bird screen

**FINISH**

Mill



VERT. SECT / ELEVATION

**OPTIONAL CONSTRUCTION**

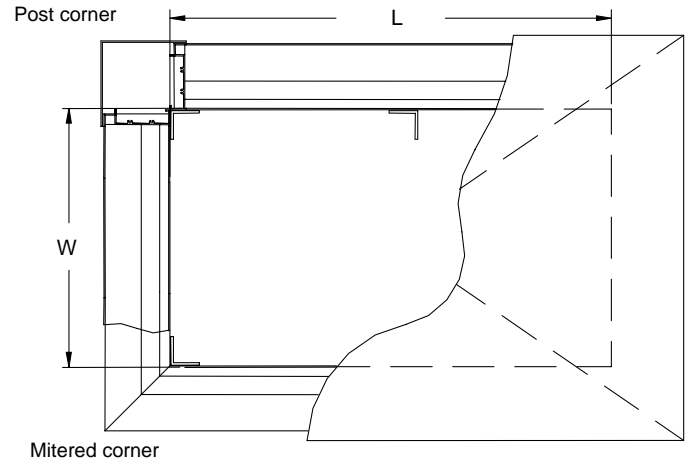
**BLADES, FRAME & ROOF** - Available in heavier gauge material

**SCREEN** - Many styles available please consult screen listing

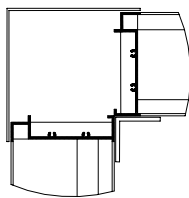
**FINISH** – Air-dry primer, polyurethane, epoxy, or enamel, baked epoxy or enamel, Kynar, or Powder coat.

**MULLION** – Visible for architectural preference

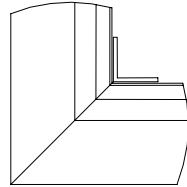
**CONSTRUCTION** – Fully welded construction



PLAN VIEW



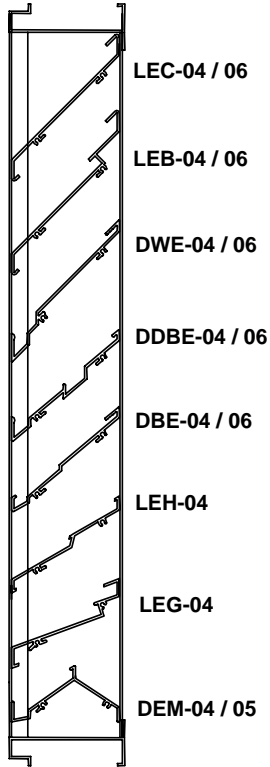
**P – series**  
Post Corners



**M – series**  
Mitered Corners

CORNER STYLES

DATE	ARCHITECT / ENGR				CUSTOMER
PROJECT					
ITEM	QTY	W	L	H	DESCRIPTION

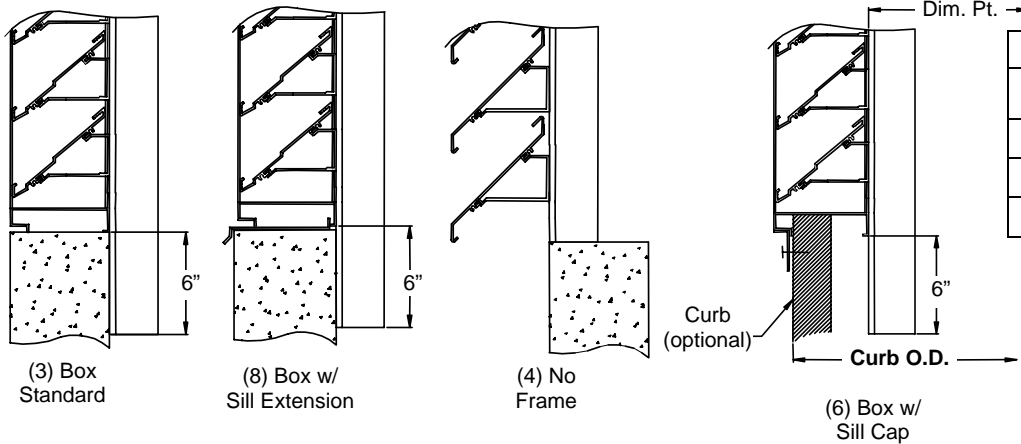


BLADE STYLES

BLADE STYLES							
Model #	Depth	Blade Style	Blade Spacing	Free Area (4' x 4' unit)	Water Penetration (.01 oz. H <sub>2</sub> O) FPM	Pressure Drop @ 1000 FPM	
LEC-04	4"	Straight @ 45°	4-1/2" oc.	50%	879	.18" wg.	
LEC-06	6"	Straight @ 45°	6-1/2" oc.	56%	906	.15" wg.	
LEB-04	4"	Hooked @ 45°	5" oc.	47%	930	.18" wg.	
LEB-06	6"	Hooked @ 45°	6-1/2" oc.	54%	852	.16" wg.	
DWE-04	4"	Drainable @ 45°	4-1/2" oc.	52%	910	.17" wg.	
DWE-06	6"	Drainable @ 45°	6-1/2" oc.	55%	939	.17" wg.	
DDBE-04	4"	Dual drain @ 40°	3-1/2" oc.	53%	1051	.12" wg.	
DDBE-06	6"	Dual drain @ 35°	5" oc.	52%	1243	.13" wg.	
DBE-04	4"	Drainable @ 40°	3-1/2" oc.	60%	1016	.12" wg.	
DBE-06	6"	Drainable @ 35°	4-3/4" oc.	63%	970	.12" wg.	
LEH-04	4"	Hooked @ 30°	3" oc.	63%	713	.16" wg.	
LEG-04	4"	Hooked @ 20°	2-1/2" oc.	52%	690	.17" wg.	
DEM-04	4"	Drain / sight proof	2" oc.	55%	1100	.27" wg.	
DEM-05	5"	Drain / sight proof	2" oc.	57%	1121	.27" wg.	

Notes:

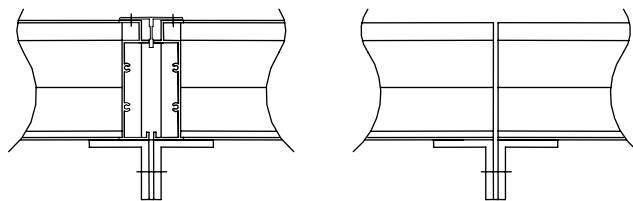
- Above performances are based on 4' x 4' unit, smaller sizes have less free areas than larger sizes.
- Wind-driven rain louvers may be used for storm-driven rain protection. Consult factory for more information.
- Any type of louver blades not shown above can be used as penthouses, i.e. adjustable louvers, combination louvers, or vertical blade configuration. Consult factory for availability.
- Back-draft dampers, control dampers, motorized/non-motorized can be installed in the throat of penthouses or roof curbs.
- Removable roof or insulated roof is available as an option.
- Roof curbs are available as option (see roof curbs section)
- Drainable louvers are best recommended with post corners and visible mullion to prevent water from cascading.



SILL FRAME STYLE

ROOF CURBS	
LOUVER DEPTH	CURB – O.D. ACTUAL
4"	Dim. Pt. + 6"
5"	Dim. Pt. + 8"
6"	Dim. Pt. + 10"

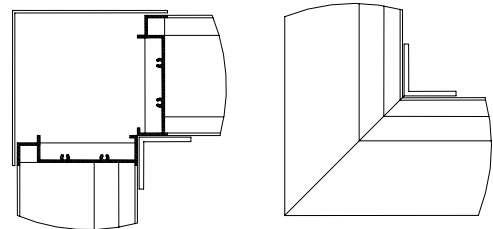
Note:  
Curb thickness shall be no more than 3" thick to fit inside the bottom frame.



Visible Mullion  
(recommended for drainables)

Invisible Mullion  
Standard

MULLION STYLE



P – series  
Post Corners

M – series  
Mitered Corners

CORNER STYLES