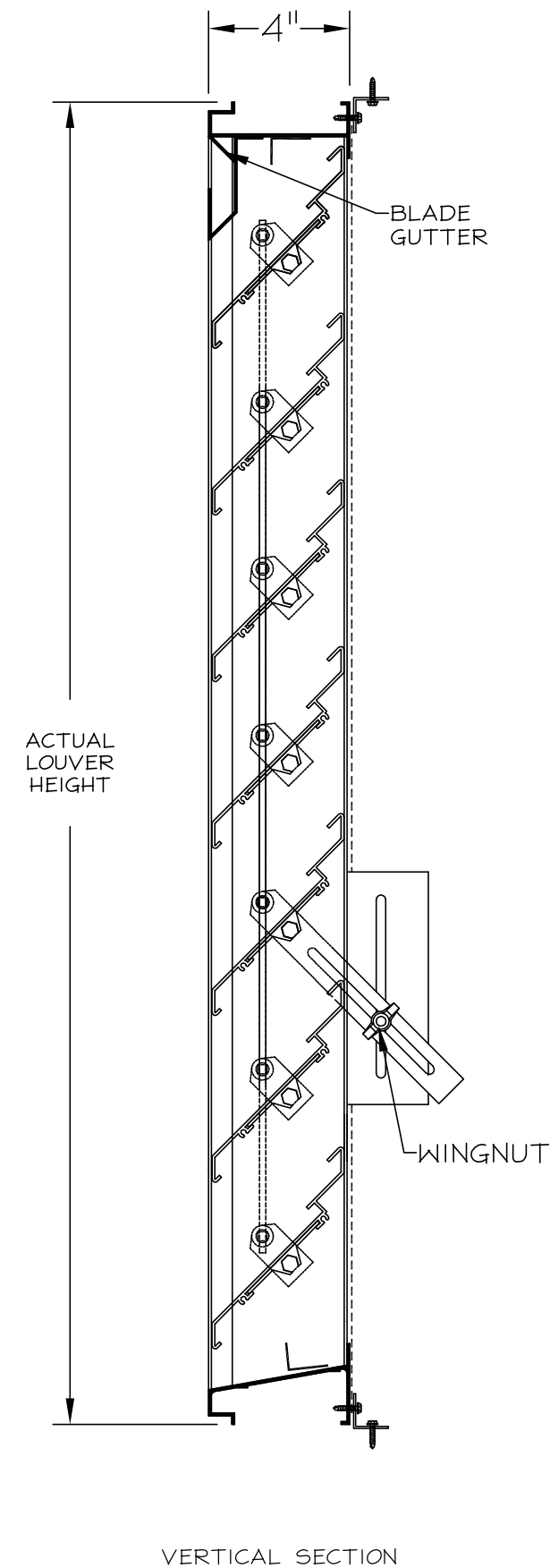
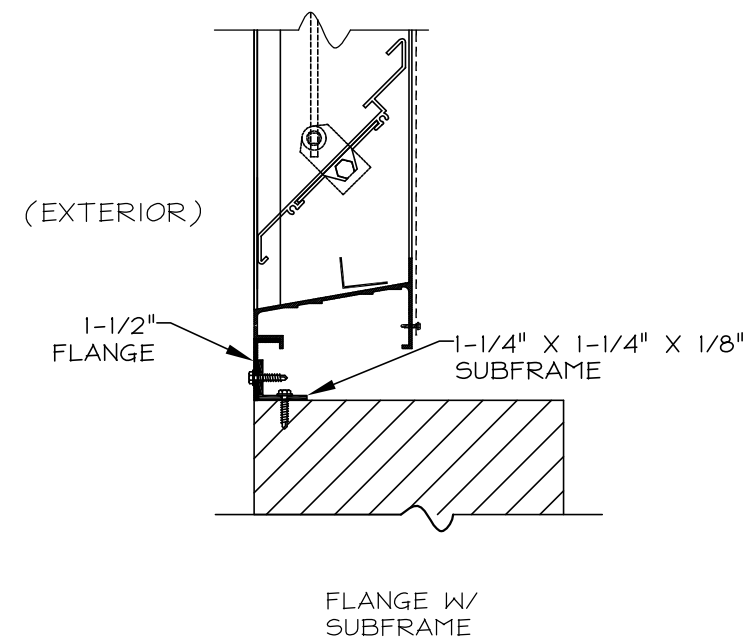
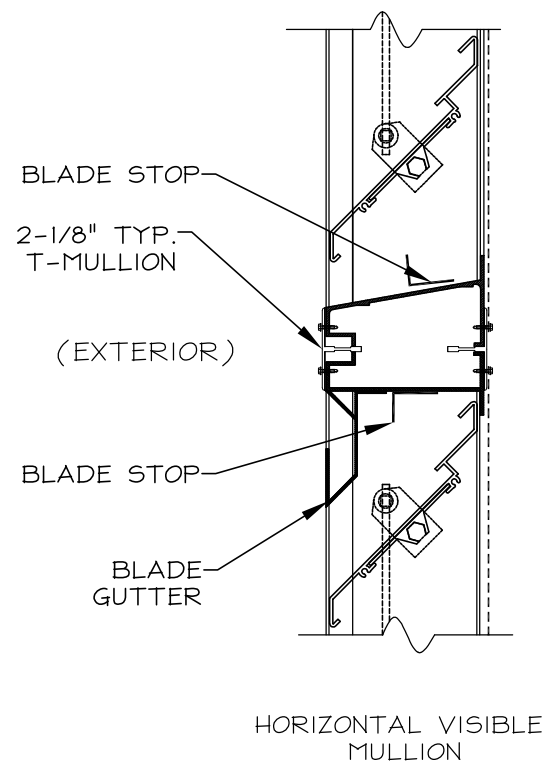
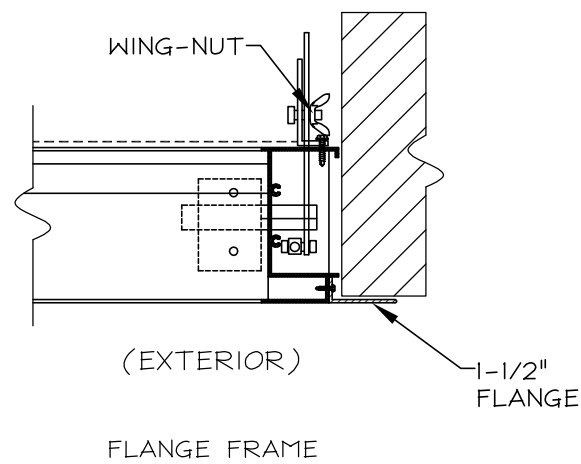
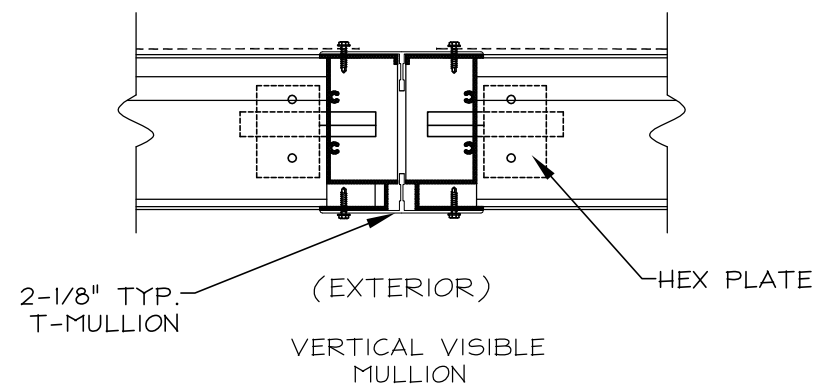
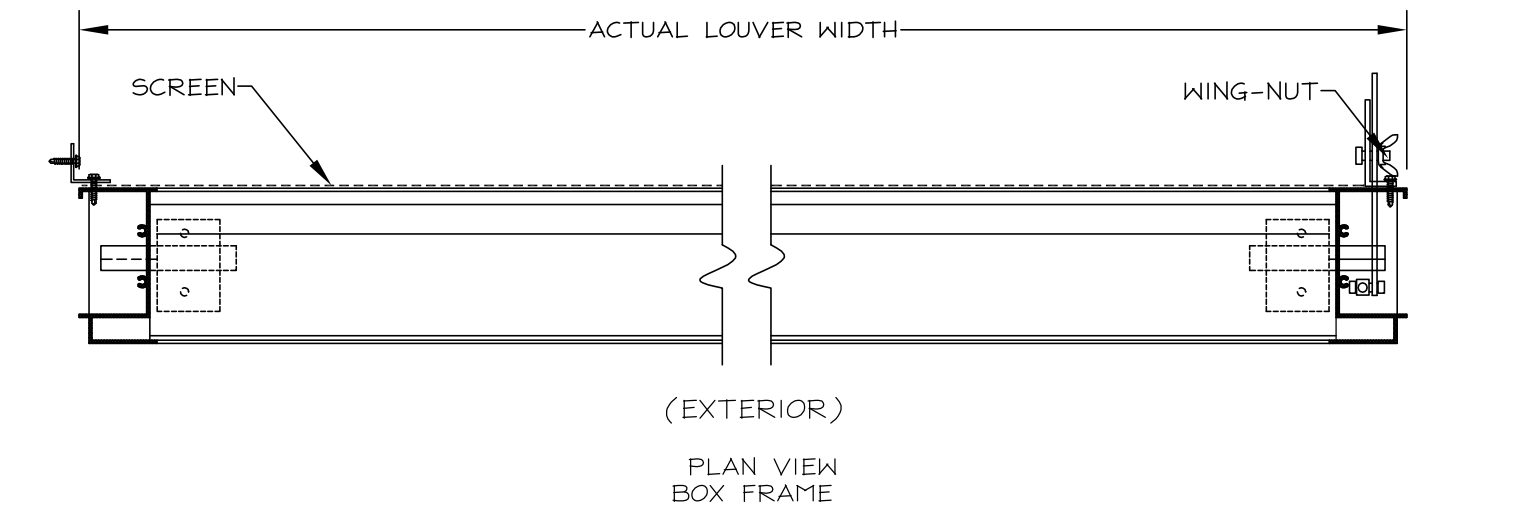



STANDARD CONSTRUCTION

MODEL: A-LEB-04/SERIES
 FRAME: .081" THK. EXTRUDED ALUM. 6063-T5
 BLADES: .081" THK. EXTRUDED ALUM. 6063-T5
 BLADE AXLES AND BEARINGS:
 7/16" PLATED HEX AND BRONZE
 OILITE BUSHING
 LINKAGE: PLATED STEEL CONCEALED IN JAMB
 FASTENERS: #10-16 X 1" PLTD. STL. TEK SCREW
 SCREEN: 3/4" X .051" FLATTENED EXPANDED
 ALUMINUM SCREEN NO FRAME
 FINISH: MILL
 OPERATOR: WING-NUT

NOTES

1. ALL LOUVERS TO BE FABRICATED 1/4" UNDER LISTED OPNG. SIZES UNLESS SPECIFIED "ACTUAL"
2. ALL OPNG SIZES TO BE FIELD VERIFIED AND GUARANTEED BY OTHERS PRIOR TO FABRICATION.
3. OTHER SURROUNDING FINISHES ARE FOR REFERENCES ONLY AND TO BE SUPPLIED BY OTHERS.



REV.	DESCRIPTION	DATE	BY
		DEPENDABLE PRODUCTS SINCE 1955	
1855 SOUTH 54TH AVENUE, CICERO, IL. 60650		ARCH/ENGR: _____ CUSTOMER: _____	
PROJECT: _____		TITLE: A-LEB-04/SERIES	
DATE:	DRAWN:		
SCALE: 1:1	CHKD:	DRWG #:	