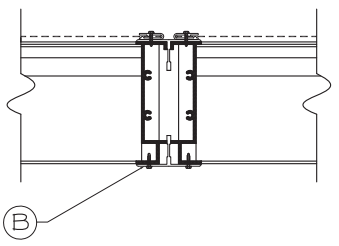
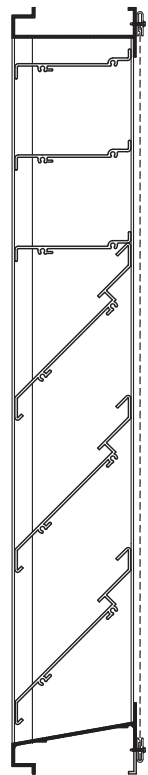


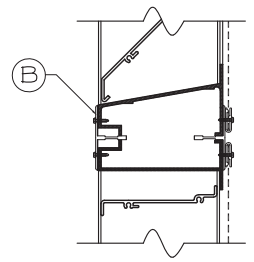
STANDARD CONSTRUCTION

MODEL: C-LEB-04-300T-D
 FRAME: .081" THK. EXTRUDED ALUM. 6063-T5
 BLADES: .081" THK. EXTRUDED ALUM. 6063-T5
 FASTENERS: #10-16 X 1" PLTD. STL. TEK SCREW
 SCREEN: .050 X 3/4" EXPANDED ALUMINUM SCREEN
 FINISH: MILL

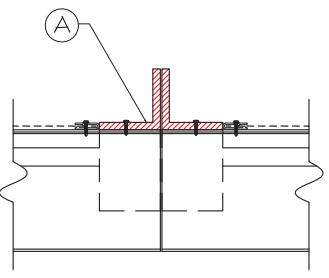
- NOTES
1. ALL LOUVERS TO BE FABRICATED 1/4" UNDER LISTED OPNG. SIZES UNLESS SPECIFIED "ACTUAL"
 2. ALL OPNG SIZES TO BE FIELD VERIFIED AND GUARANTEED BY OTHERS PRIOR TO FABRICATION.
 3. OTHER SURROUNDING FINISHES ARE FOR REFERENCES ONLY AND TO BE SUPPLIED BY OTHERS.



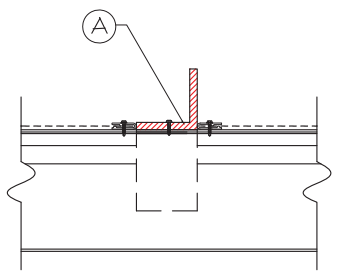
VERTICAL VISIBLE MULLION



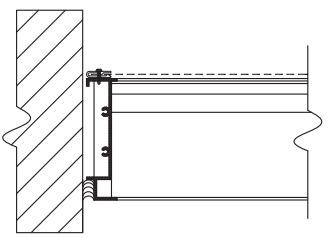
HORIZONTAL VISIBLE MULLION



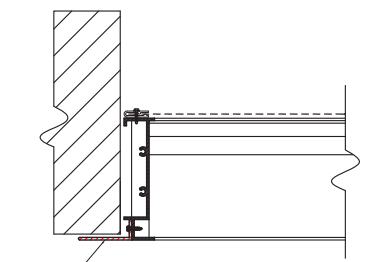
VERTICAL INVISIBLE MULLION



CONTINUOUS BLADE MULLION



BOX FRAME



FLANGE FRAME

- (A) 2"x2"x1/4" ALUMINUM ANGLE SUPPORT W/ BLADE BRACE
- (B) 2-1/8" TYPICAL T-MULLION
- (C) 1-1/2" FLANGE

DOWCO Products Group
 1855 SOUTH 54TH AVENUE, CICERO, IL. 60650
 DEPENDABLE PRODUCTS SINCE 1985

ARCH/ENGR: _____ CUSTOMER: _____

PROJECT: _____ TITLE: C-LEB-04/SERIES

REV.	DESCRIPTION	DATE	BY

DATE:	DRAWN:
SCALE: 1:1	CHKD:
	DRWG #: