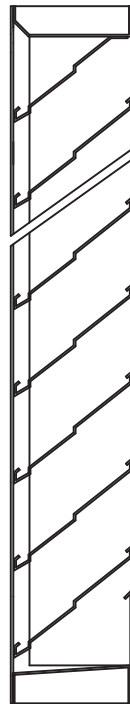
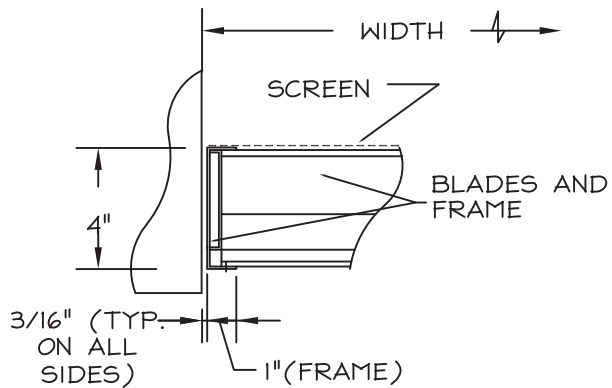


FRONT ELEVATION



SECTION "B"



SECTION "A"

STANDARD CONSTRUCTION

MODEL: DBF-04

WELDED CONSTRUCTION

SILL EXTENSION

FRAME: 16 GA. 316L STAINLESS STEEL

BLADES: 18 GA. 316L STAINLESS STEEL

FASTENERS: SSSL. RIVETS EXPOSED TO VIEW

SCREEN: 1/2" SQ STAINLESS STEEL MESH (W/FRAMES)

FINISH: EXTERNAL SIDE ONLY POLISHED TO #4 FINISH

NOTES:

1. ALL LOUVERS TO BE FABRICATED TO ACTUAL SIZES
2. ALL OPNG SIZES TO BE FIELD VERIFIED AND GUARANTEED BY OTHERS PRIOR TO FABRICATION.
3. OTHER SURROUNDING FINISHES ARE FOR REFERENCES ONLY AND TO BE SUPPLIED BY OTHERS.

SAFE AIR  DEPENDABLE PRODUCTS SINCE 1965
DOWCO  1855 SOUTH 54TH AVENUE, CICERO, IL. 60650

REV.	DESCRIPTION	BY	ARCH/ENGR: DATE	CUSTOMER:
			PROJECT:	TITLE: DBF-04/SERIES
			DATE:	DRAWN:
			SCALE: 1:1	CHKD:
				DRWG #: