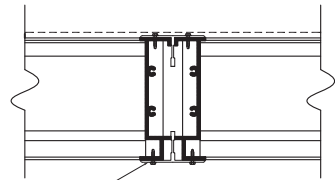
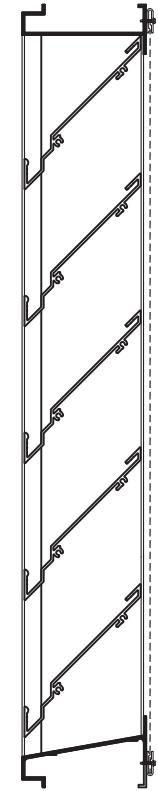


STANDARD CONSTRUCTION

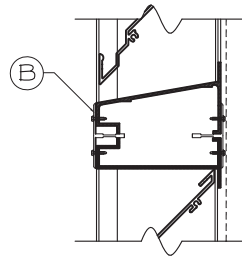
MODEL: DWE-04-300T-D  
 FRAME: .081" THK. EXTRUDED ALUM. 6063-T5  
 BLADES: .081" THK. EXTRUDED ALUM. 6063-T5  
 FASTENERS: #10-16 X 1" PLTD. STL. TEK SCREW  
 SCREEN: .050 X 3/4" EXPANDED ALUMINUM SCREEN  
 FINISH: MILL

NOTES

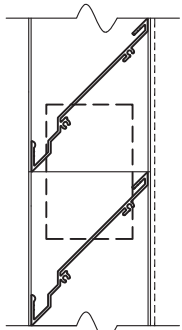
1. ALL LOUVERS TO BE FABRICATED 1/4" UNDER LISTED OPNG. SIZES UNLESS SPECIFIED "ACTUAL"
2. ALL OPNG SIZES TO BE FIELD VERIFIED AND GUARANTEED BY OTHERS PRIOR TO FABRICATION.
3. OTHER SURROUNDING FINISHES ARE FOR REFERENCES ONLY AND TO BE SUPPLIED BY OTHERS.



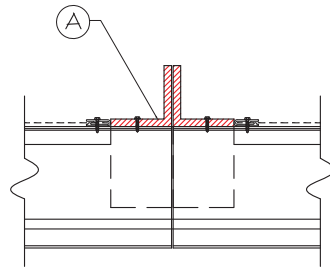
(B) VERTICAL VISIBLE MULLION



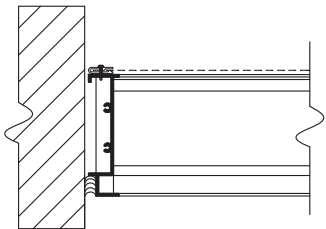
(B) HORIZONTAL VISIBLE MULLION



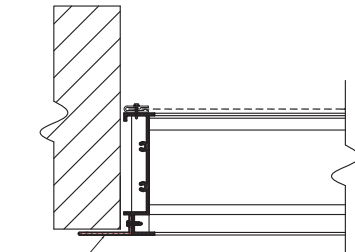
HORIZONTAL INVISIBLE MULLION



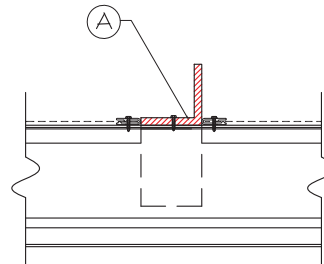
(A) VERTICAL INVISIBLE MULLION



BOX FRAME



(C) FLANGE FRAME



(A) CONTINUOUS BLADE

- (A) 2"x2"x1/4" ALUMINUM ANGLE SUPPORT W/ BLADE BRACE
- (B) 2-1/8" TYPICAL T-MULLION
- (C) 1-1/2" FLANGE



DEPENDABLE PRODUCTS SINCE 1965

1855 SOUTH 54TH AVENUE, CICERO, IL. 60650

ARCH/ENGR: CUSTOMER:

PROJECT: TITLE: DWE-04/SERIES

DATE: DRAWN: SCALE: 1:1 CHKD: DRWG #:

REV.	DESCRIPTION	DATE	BY