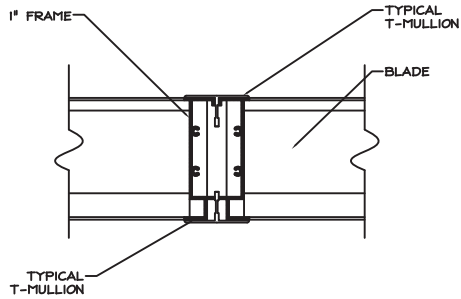


STANDARD CONSTRUCTION

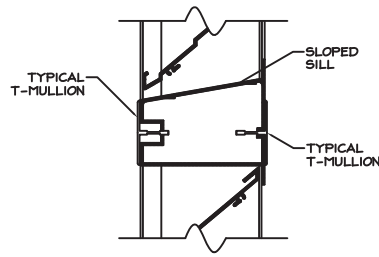
MODEL: D-DBE-04-300T-D
 FRAME: .081" THK. EXTRUDED ALUM. 6063-T5
 BLADES: .081" THK. EXTRUDED ALUM. 6063-T5
 FASTENERS: #10-16 X 1" PLTD. STL. TEK SCREW
 SCREEN: .050 X 3/4" EXPANDED ALUMINUM SCREEN
 FINISH: MILL

NOTES

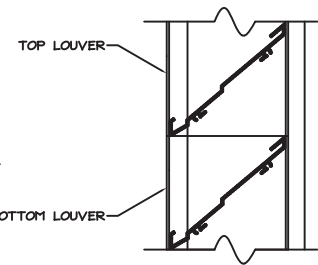
1. ALL LOUVERS TO BE FABRICATED 1/4" UNDER LISTED OPNG. SIZES UNLESS SPECIFIED "ACTUAL"
2. ALL OPNG SIZES TO BE FIELD VERIFIED AND GUARANTEED BY OTHERS PRIOR TO FABRICATION.
3. OTHER SURROUNDING FINISHES ARE FOR REFERENCES ONLY AND TO BE SUPPLIED BY OTHERS.



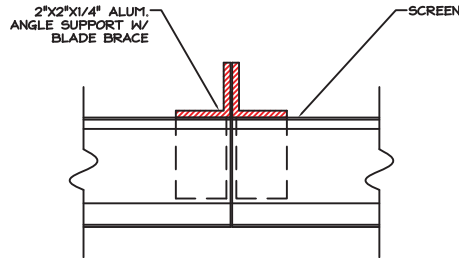
VERTICAL VISIBLE MULLION



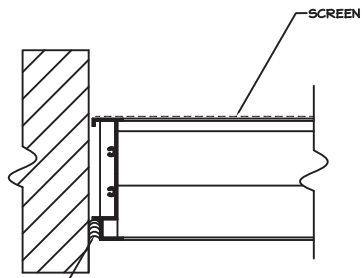
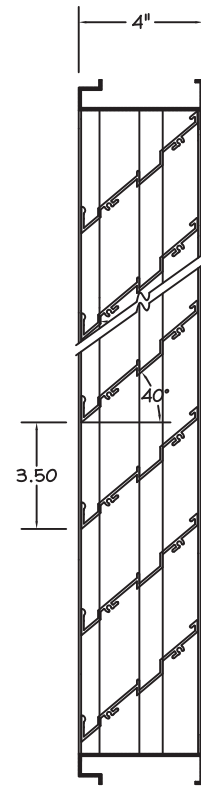
HORIZONTAL VISIBLE MULLION



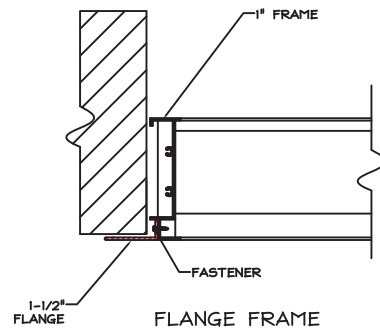
HORIZONTAL INVISIBLE MULLION



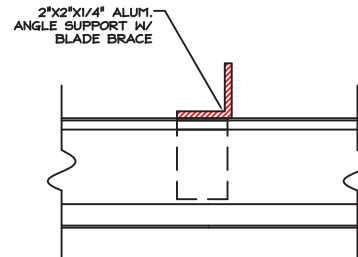
VERTICAL INVISIBLE MULLION



BOX FRAME



FLANGE FRAME



CONTINUOUS BLADE

REV.	DESCRIPTION	DATE	BY

DATE:		DRAWN:		TITLE:	
CHKD:				D-DBE-04/SERIES	
				DRWG #:	

DOWCO Products Group
 1855 SOUTH 54TH AVENUE, CICERO, IL. 60650
 DEPENDABLE PRODUCTS SINCE 1985

ARCH/ENGR: _____ CUSTOMER: _____

PROJECT: _____ TITLE: _____