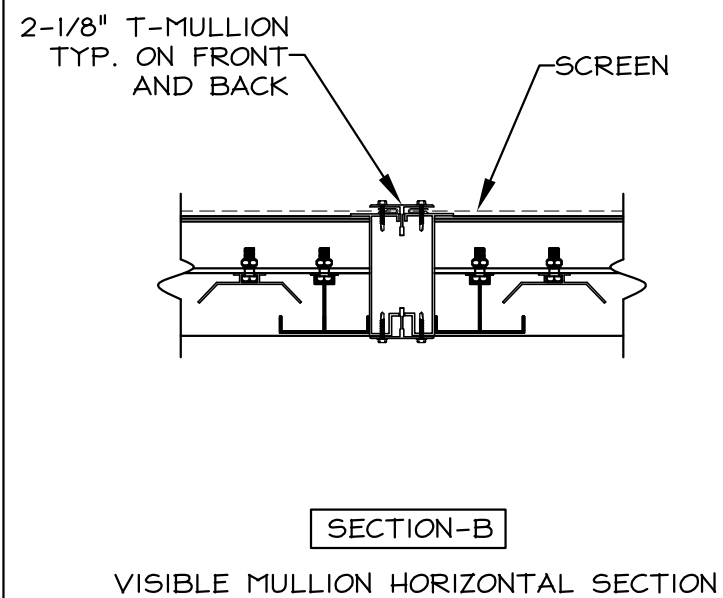
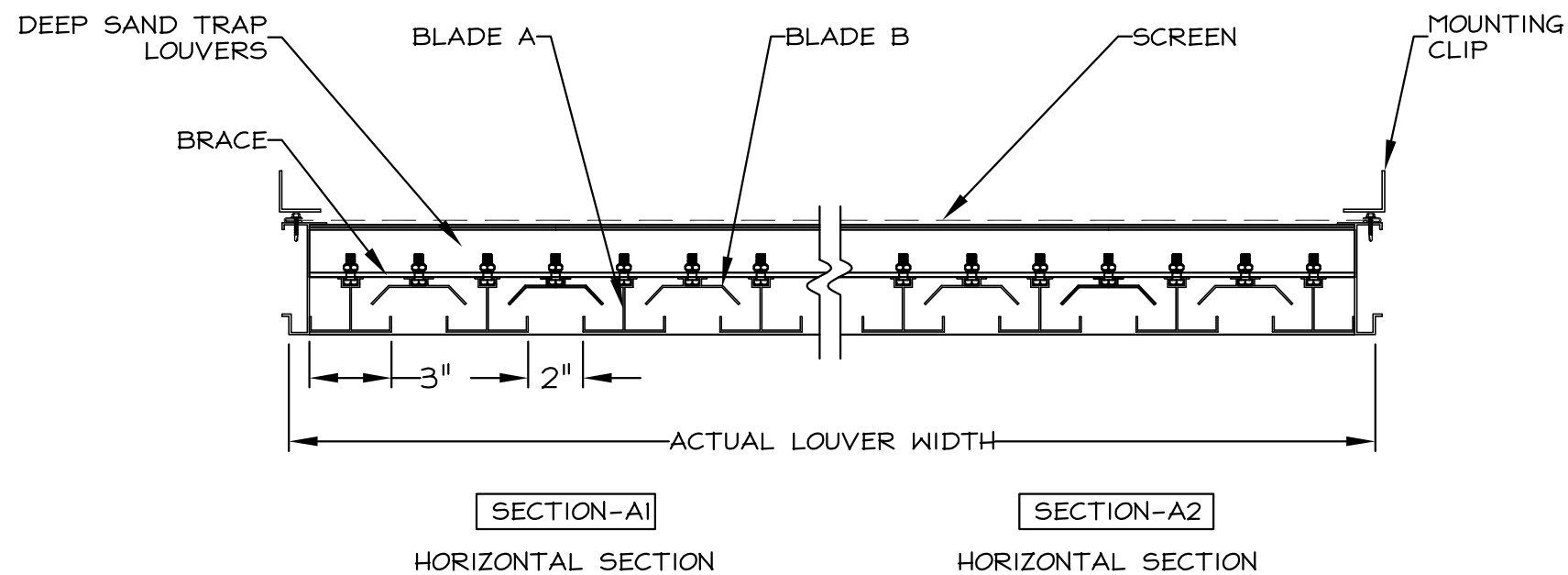


**SAND LOUVER CONSTRUCTION**

MODEL: GEL-35/SERIES  
 FRAME: .081" THK. EXTRUDED ALUM. (6063-T5)  
 BLADES: .063 THK. EXTRUDED ALUM. (6063-T5)  
 FASTENERS: #10-16 X 25 PLTD. STL. TEK SCREWS  
 SCREEN: 3/4" X .050 EXPANDED ALUM. SCREEN NO FRAME  
 FINISH: MILL

**NOTES:**

1. ALL LOUVERS TO BE FABRICATED 1/4" UNDER LISTEN OPNG. UNLESS SPECIFIED "ACTUAL".
2. ALL OPNG SIZES TO BE FIELD VERIFIED AND GUARANTEED BY OTHERS PRIOR TO FABRICATION
3. OTHER SURROUNDING FINISHES ARE FOR REFERENCES AND TO BE SUPPLIED BY OTHERS
4. SUPPORTS ALL LOUVERS WITH MTG. CLIPS OR APPROVED EQ. @ 24" OC. SUPPLIED BY OTHERS



**DOWCOR** Products Group  
 1855 SOUTH 54TH AVENUE, CICERO, IL. 60650  
 DEPENDABLE PRODUCTS SINCE 1955

|            |             |               |    |
|------------|-------------|---------------|----|
| ARCH/ENGR: |             | CUSTOMER:     |    |
| PROJECT:   |             | TITLE:        |    |
| DATE:      | DRAWN:      | DRWG #:       |    |
|            | CHKD:       | GEL-35/SERIES |    |
| REV.       | DESCRIPTION | DATE          | BY |
|            |             |               |    |