

STANDARD CONSTRUCTION

MODEL: LEB-06-300T-D
 FRAME: .081" THK. EXTRUDED ALUM. 6063-T5
 BLADES: .081" THK. EXTRUDED ALUM. 6063-T5
 FASTENERS: #10-16 X 1" PLTD. STL. TEK SCREW
 SCREEN: .050 X 3/4" EXPANDED ALUMINUM SCREEN
 FINISH: MILL

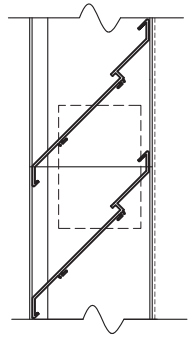
NOTES

1. ALL LOUVERS TO BE FABRICATED 1/4" UNDER LISTED OPNG. SIZES UNLESS SPECIFIED "ACTUAL"
2. ALL OPNG SIZES TO BE FIELD VERIFIED AND GUARANTEED BY OTHERS PRIOR TO FABRICATION.
3. OTHER SURROUNDING FINISHES ARE FOR REFERENCES ONLY AND TO BE SUPPLIED BY OTHERS.

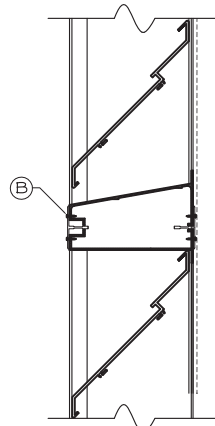
(A) 2"x2"x1/4" ALUMINUM ANGLE SUPPORT W/ BLADE BRACE

(B) 2-1/8" TYPICAL T-MULLION

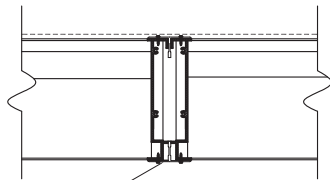
(C) 1-1/2" FLANGE



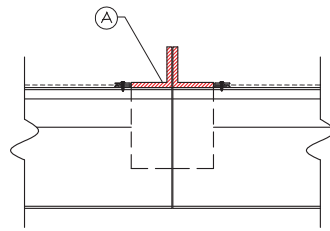
HORIZONTAL INVISIBLE MULLION



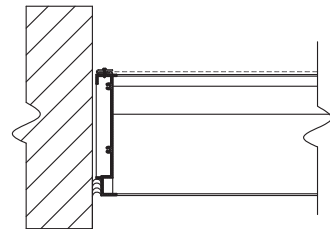
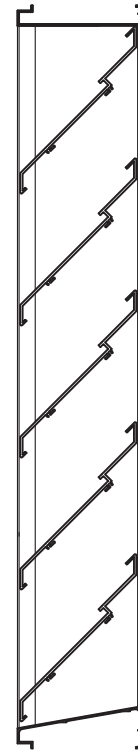
HORIZONTAL VISIBLE MULLION



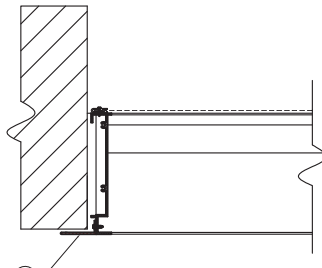
VERTICAL VISIBLE MULLION



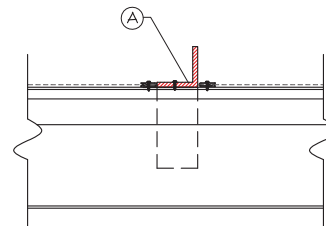
VERTICAL INVISIBLE MULLION



BOX FRAME



FLANGE FRAME



CONTINUOUS BLADE

REV.	DESCRIPTION	DATE	BY	DATE:	DRAWN:	TITLE:
						LEB-06/SERIES
						DRWG #:



DEPENDABLE PRODUCTS SINCE 1985

1855 SOUTH 54TH AVENUE, CICERO, IL. 60650

ARCH/ENGR: _____ CUSTOMER: _____

PROJECT: _____ TITLE: _____

DATE: _____ DRAWN: _____ DRWG #:

SCALE: 1:1 CHKD: _____