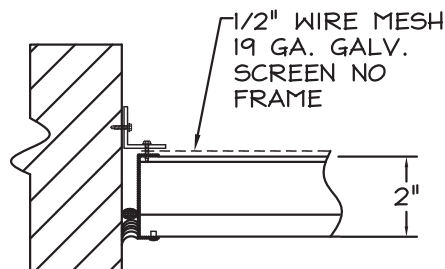


STANDARD CONSTRUCTION

OPTIONAL CONSTRUCTION

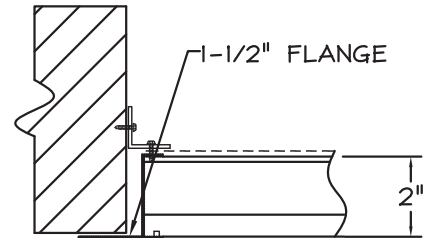
STATIONARY GALVANIZED STEEL LOUVER

LFD-02/SERIES



(EXTERIOR)

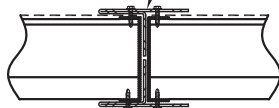
BOX FRAME



(EXTERIOR)

FLANGE FRAME

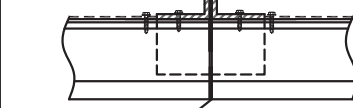
2-1/8" TYP. MULLION
FRONT & BACK



(EXTERIOR)

VERTICAL VISIBLE MULLION

1-1/4" x 1-1/4" x 12 GA
VERT. SUPPORT
W/ BLADE BRACES



1/8" EXP. JOINT

(EXTERIOR)

VERTICAL INVISIBLE MULLION

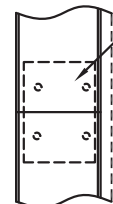
2-1/8" TYP.
MULLION
FRONT & BACK



(EXTERIOR)

HORIZONTAL VISIBLE MULLION

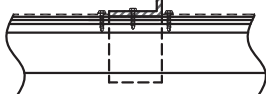
JAMB SPLICE
PLATE



(EXTERIOR)

HORIZONTAL INVISIBLE MULLION

1-1/4" x 1-1/4" x 12 GA
VERT. SUPPORT
W/ BLADE BRACES



(EXTERIOR)

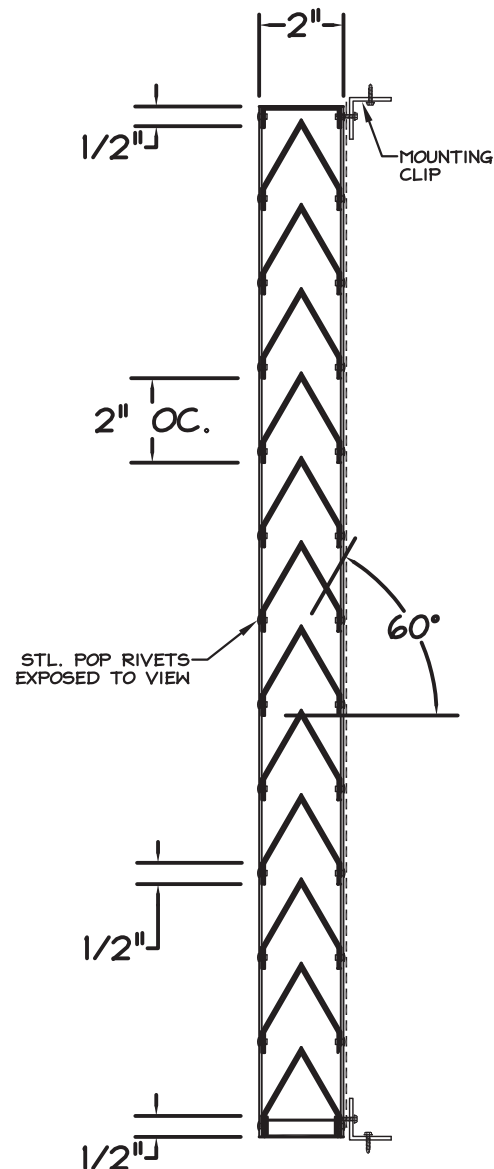
CONTINUOUS BLADE

1-7/8" x 1" x .081"
SEMI-INVISIBLE
MULLION

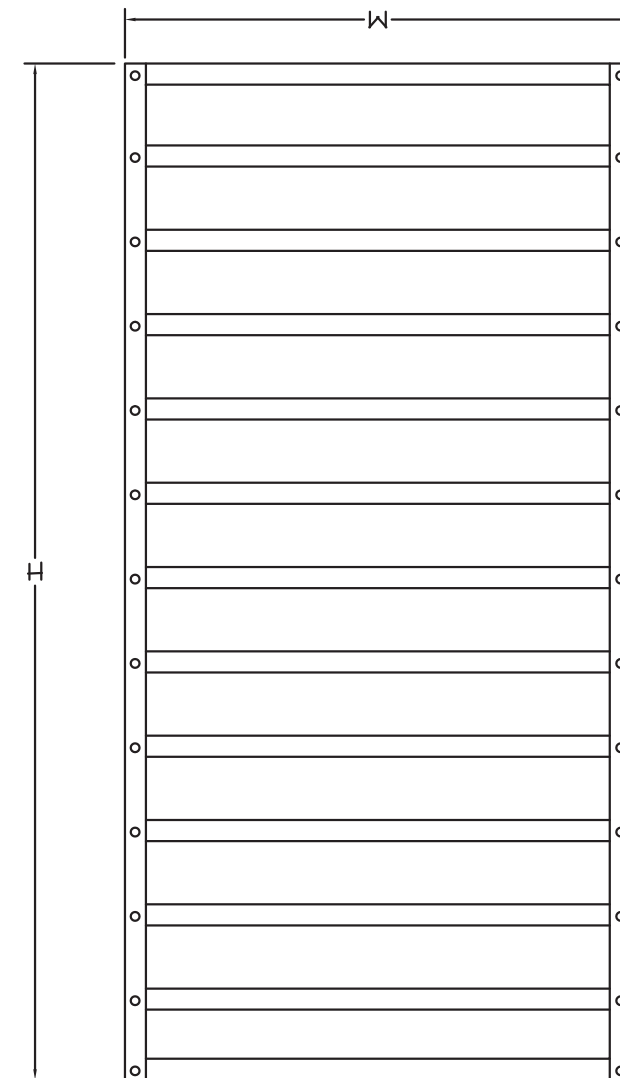


(EXTERIOR)

SEMI-INVISIBLE MULLION



VERTICAL SECTION



FRONT ELEVATION

REV.	DESCRIPTION	DATE	BY

STANDARD CONSTRUCTION:

FRAME: 20 GAUGE GALVANIZED STEEL
BLADES: 20 GAUGE GALVANIZED STEEL
FASTENERS: STL. POP RIVETS EXPOSED TO VIEW
SCREEN: 1/2" WIRE MESH 19 GAUGE GALVANIZED SCREEN NO FRAME
FINISH: MILL

NOTES:

1. ALL LOUVERS TO BE FABRICATED 3/8" UNDER LISTED OPENING SIZES UNLESS SPECIFIED "ACTUAL"
2. ALL OPENING SIZES TO BE FIELD VERIFIED AND GUARANTEED BY OTHERS PRIOR TO FABRICATION.
3. OTHER SURROUNDING FINISHES ARE FOR REFERENCES ONLY AND TO BE SUPPLIED BY OTHERS.

LOUVER SCHEDULE

TAG	QTY	SIZE (WXH)	NOTES



DEPENDABLE PRODUCTS
SINCE 1955

1855 SOUTH 54TH AVENUE, CICERO, IL. 60650

ARCH/ENGR: CUSTOMER:

PROJECT: TITLE:
LFD-02/SERIES

DATE: DRAWN:

SCALE: 1:1 CHKD: DRWG #: