

STANDARD CONSTRUCTION

MODEL: UFF-12-300T-D  
 FRAME: 16 GA GALV. STEEL  
 BLADES: 20 GA. GALV. STEEL  
 PERFORATED BLADES: 22 GA. GALV.  
 STEEL 1/8" DIA. X 3/16" SECURED  
 UNDERSIDE  
 INSULATION: 6# DENSITY PCF MINERAL  
 WOOL INSULATION  
 FINISH: MILL

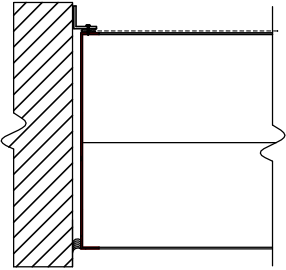
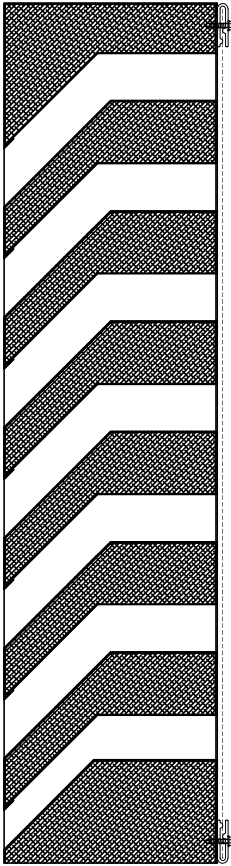
NOTES

1. ALL LOUVERS TO BE FABRICATED 1/4" UNDER LISTED OPNG. SIZES UNLESS SPECIFIED "ACTUAL"
2. ALL OPNG SIZES TO BE FIELD VERIFIED AND GUARANTEED BY OTHERS PRIOR TO FABRICATION.
3. OTHER SURROUNDING FINISHES ARE FOR REFERENCES ONLY AND TO BE SUPPLIED BY OTHERS.

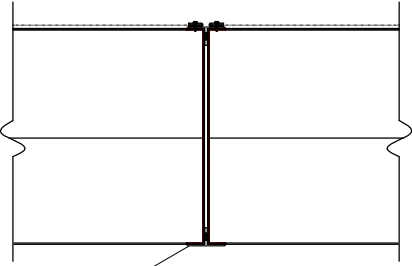
(A) 2-1/8" TYPICAL T-MULLION

(B) 1-1/2" FLANGE

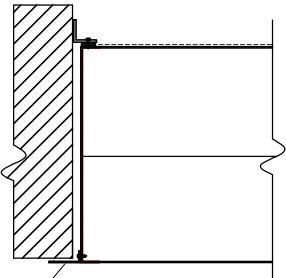
(C) 11-7/8" X 1" X .081" SEMI-INVISIBLE MULLION



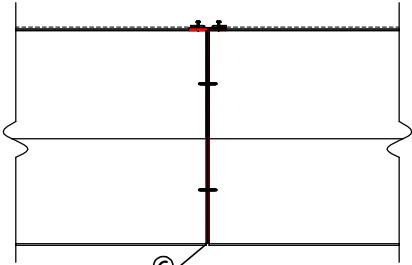
BOX FRAME



(A) VERTICAL VISIBLE MULLION



(B) FLANGE FRAME



(C) VERTICAL SEMI-INVISIBLE MULLION

<b>DOWCO</b> Products Group		DEPENDABLE PRODUCTS SINCE 1965	
1855 SOUTH 54TH AVENUE, CICERO, IL. 60650			
ARCH/ENGR:		CUSTOMER:	
PROJECT:			TITLE: UFF-12/SERIES

REV.	DESCRIPTION	DATE	BY

DATE:	DRAWN:	DRWG #:
SCALE: 1:1	CHKD:	