

Dynamic Curtain Fire Damper - MODEL D-300C-OV/RD

Features – U. L. Rated for 3-hour fire damper, for use in a 4-hour fire partition. • Meets NFPA 90A & UL555 Meets California State Fire Marshal Requirements.

STANDARD CONSTRUCTION

FRAME

4-7/8" deep, 22 gauge galvanized steel

BLADES

3-3/8" wide, 22 gauge galvanized steel

UNDERSIZED

1/4" under ordered size unless specified otherwise

FUSIBLE LINK

165° Standard (others available)

SPRING

Stainless Steel – 301 Negator type

MAXIMUM SIZE

22" x 21" – OV

21" diameter – RD

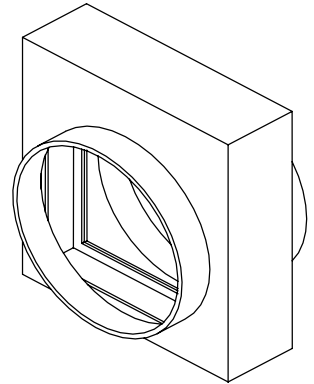
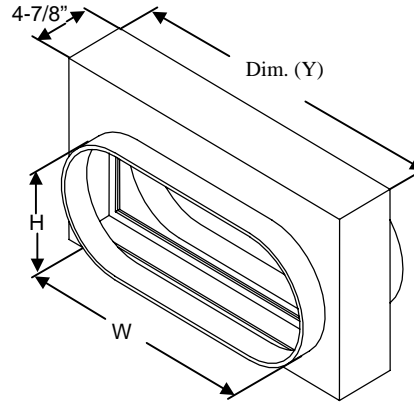
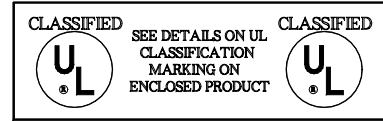
MINIMUM SIZE

4" x 4" – OV

4" diameter – RD

MAXIMUM STATIC PRESSURE (damper closed)

4" WG @ 2000 FPM



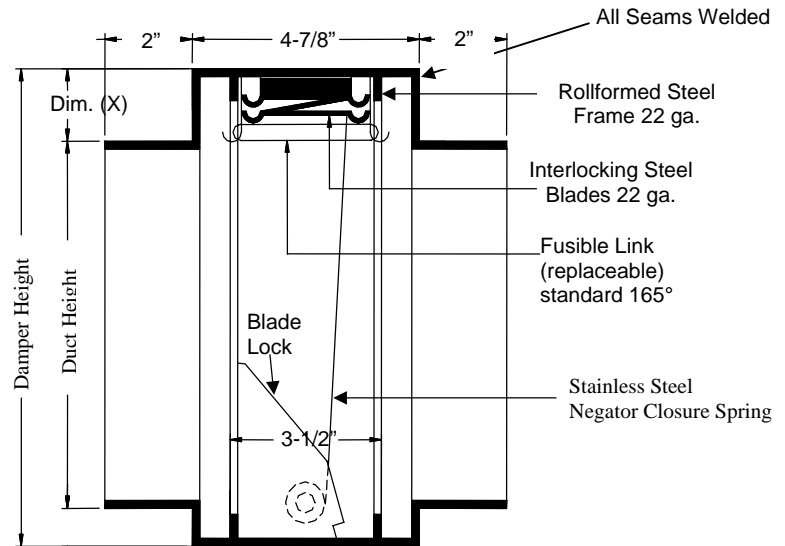
OPTIONAL CONSTRUCTION

FRAME – Available in Stainless Steel

BLADE – Available in Stainless Steel

FUSIBLE LINK – Electrically triggered link (ETL)

SLEEVE & DUCT CONNECTION – 10 ga. to 20 ga. galvanized steel to 30" in length. Factory can install access door, retaining angles, flange connections or security bars.



| Damper Height | | |
|---------------|----------|----------|
| Duct Height | Dim. (X) | Dim. (Y) |
| 4" thru 15" | 2" | W + 2" |
| 16" thru 21" | 3" | W + 2" |

Vertical Section
(Not available in horizontal)

| | | | | | |
|---------|-----|-----------|---|-------------|--|
| DATE | | ARCHITECT | | CUSTOMER | |
| PROJECT | | | | | |
| ITEM | QTY | W | H | DESCRIPTION | |
| | | | | | |
| | | | | | |
| | | | | | |
| | | | | | |
| | | | | | |