

Weather Protective Blade Louver in 6" thick frame design – Model LFA- 06

Features – Traditional design with center blade baffle for improved weather protection.

STANDARD CONSTRUCTION

FRAME

LFA- 06" (152) thick, is 20 gauge (1.0) galvanized steel in style #2

BLADES

LFA- 06", are 20 (1.0) gauge galv. steel, approx. spacing is 6-1/2" (165) @ 45°

MAXIMUM SIZE

Unlimited, with mullions, structural bracing supplied by others

MAXIMUM SINGLE SECTION

120" w x 84" h or 84" w x 120" h
(allows for best handling)

MULLIONS

Visible

MINIMUM SIZE

12" W x 12" H (305 x 305)

UNDERSIZED

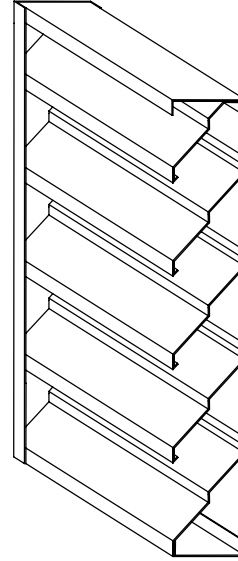
3/8" (10) under ordered size unless specified Exact or Actual

SCREEN

1/2" (13) wire mesh 19 gauge (1.1) galvanized bird screen no frame

FINISH

Mill



OPTIONAL CONSTRUCTION

FRAME – Available in a heavier construction up to 10 gauge (3.5)

BLADES - Available in a heavier construction up to 12 gauge (2.7)

SPECIFIED MATERIAL – Aluminum, Stainless or as requested

SCREENS - Many styles available please consult screen listing

MULLIONS – Invisible for enhanced architectural appearance.

FINISH – Air-dry primer, polyurethane, epoxy, or enamel. Baked epoxy or enamel. Kynar (Kynar limitations on steel.)

SPECIAL PURPOSE CONSTRUCTION

Special shapes; Round, Triangle, Trapezoid, Octagon, etc.

Fully welded assembly

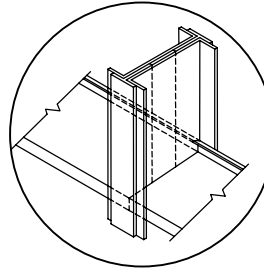
Security bars

Filter racks

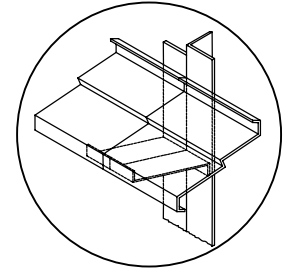
Hinged as walk through door or for swing out access

Sleeved for ductwork connection

MULLION STYLES

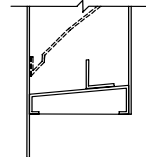


Visible

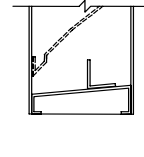


Invisible

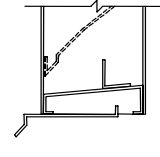
FRAME STYLES



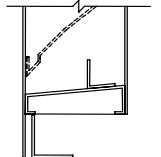
1- Flange (1.5")



2 - Channel

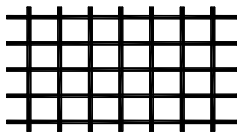


7- Channel with Sill Extension



9 - Flange with Sub Frame

TYPICAL SCREEN STYLE



Wire Mesh
Standard

DATE	ARCHITECT			ENGINEER
PROJECT				
ITEM	QTY	W	H	DESCRIPTION



DEPENDABLE PRODUCTS SINCE 1955

SAFE-AIR OF ILLINOIS INC.

Engineering and General Offices

1855 South 54th Avenue, Cicero, Illinois 60804

Phone 708-652-9100 FAX 708-652-9158

All calculations made in accordance with AMCA standards for Free-Area.

FREE AREA CALCULATIONS IN SQ. FT.

WIDTH

INCHES	12	18	24	30	36	42	48	54	60	66	72	78	84	90	96	102	108	114	120
12	.26	.42	.57	.72	.87	1.02	1.17	1.32	1.48	1.63	1.78	1.93	2.08	2.23	2.38	2.54	2.69	2.84	2.99
18	.51	.80	1.09	1.38	1.67	1.96	2.25	2.54	2.83	3.12	3.41	3.70	3.99	4.28	4.57	4.86	5.15	5.44	5.73
24	.75	1.18	1.61	2.04	2.47	2.90	3.33	3.76	4.18	4.61	5.04	5.47	5.90	6.33	6.76	7.19	7.62	8.05	8.48
30	.99	1.56	2.13	2.70	3.27	3.83	4.40	4.97	5.54	6.11	6.68	7.24	7.81	8.38	8.95	9.52	10.08	10.65	11.22
36	1.24	1.94	2.65	3.36	4.07	4.77	5.48	6.19	6.89	7.60	8.31	9.01	9.72	10.43	11.14	11.84	12.55	13.26	13.96
42	1.48	2.33	3.17	4.02	4.86	5.71	6.56	7.40	8.25	9.09	9.94	10.79	11.63	12.48	13.32	14.17	15.01	15.86	16.71
48	1.75	2.74	3.74	4.74	5.74	6.73	7.73	8.73	9.73	10.72	11.72	12.72	13.72	14.71	15.71	16.71	17.71	18.70	19.70
54	2.04	3.20	4.36	5.53	6.69	7.86	9.02	10.18	11.35	12.51	13.67	14.84	16.00	17.17	18.33	19.49	20.66	21.82	22.98
60	2.33	3.66	4.99	6.32	7.65	8.98	10.31	11.64	12.97	14.30	15.63	16.96	18.29	19.62	20.95	22.28	23.61	24.94	26.27
66	2.63	4.11	5.61	7.11	8.60	10.10	11.60	13.09	14.59	16.08	17.58	19.08	20.57	22.07	23.57	25.06	26.56	28.05	29.55
72	2.91	4.57	6.23	7.90	9.56	11.22	12.88	14.55	16.21	17.87	19.53	21.20	22.86	24.52	26.18	27.85	29.51	31.17	32.83
78	3.16	4.96	6.76	8.56	10.37	12.17	13.97	15.78	17.58	19.38	21.18	22.99	24.79	26.59	28.40	30.20	32.00	33.81	35.61
84	3.40	5.34	7.28	9.22	11.17	13.11	15.05	16.99	18.93	20.87	22.82	24.76	26.70	28.64	30.58	32.53	34.47	36.41	38.35
90	3.64	5.72	7.80	9.88	11.96	14.05	16.13	18.21	20.29	22.37	24.45	26.53	28.61	30.69	32.77	34.85	36.93	39.01	41.09
96	3.88	6.10	8.32	10.54	12.76	14.98	17.20	19.42	21.64	23.86	26.08	28.30	30.52	32.74	34.96	37.18	39.40	41.62	43.84
102	4.13	6.49	8.84	11.20	13.56	15.92	18.28	20.64	23.00	25.35	27.71	30.07	32.43	34.79	37.15	39.51	41.86	44.22	46.58
108	4.37	6.87	9.37	11.86	14.36	16.86	19.36	21.85	24.35	26.85	29.35	31.84	34.34	36.84	39.34	41.83	44.33	46.83	49.33
114	4.66	7.32	9.98	12.64	15.30	17.96	20.62	23.28	25.94	28.60	31.26	33.92	36.58	39.24	41.90	44.56	47.22	49.88	52.54
120	4.95	7.77	10.60	13.42	16.25	19.08	21.60	24.73	27.56	30.38	33.21	36.06	38.86	41.69	44.51	47.34	50.17	52.99	55.82

HEIGHT