

## Chevron Blade Louver in 6" thick frame design Model LFD-06

Features — Sightproof design.

### STANDARD CONSTRUCTION

**FRAME**

LFD-06" (152) thick, is 20 gauge (1.0) galvanized steel in style #2

**BLADES**

LFD- 06", (152) are 20 gauge (1.0) galv. steel, approx. spacing is 3-1/2" (76) @ 45°

**MAXIMUM SIZE**

Unlimited, with mullions, structural bracing supplied by others

**MAXIMUM SINGLE SECTION**

120" w x 96" H or 96" w x 120" H (3048 x 2438) or ( 2438 x 3048)  
(allows for best handling)

**MULLIONS**

Visible

**MINIMUM SIZE**

12" W x 12" H (305 x 305)

**UNDERSIZED**

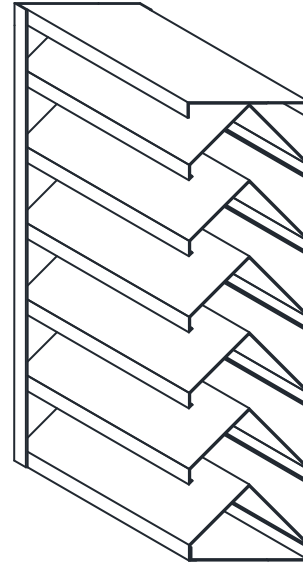
3/8" (10) under ordered size unless specified Exact or Actual

**SCREEN**

1/2" (13) wire mesh 19 gauge (1.1) galvanized bird screen no frame

**FINISH**

Mill



### OPTIONAL CONSTRUCTION

**FRAME** — Available in a heavier construction up to 10 gauge (3.5)

**BLADES** - Available in a heavier construction up to 16 gauge (1.6)

**SPECIFIED MATERIAL** — Aluminum, Stainless or as requested

**SCREENS** - Many styles available please consult screen listing

**MULLIONS** — Invisible for enhanced architectural appearance.

**FINISH** — Air-dry primer, polyurethane, epoxy, or enamel. Baked epoxy or enamel. Kynar ( Kynar limitations on steel.)

### SPECIAL PURPOSE CONSTRUCTION

Special shapes; Round, Triangle, Trapezoid, Octagon, etc.

Fully welded assembly

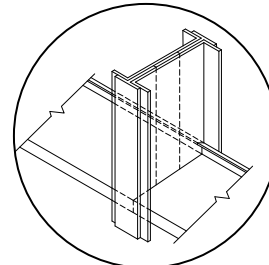
Security bars

Filter racks

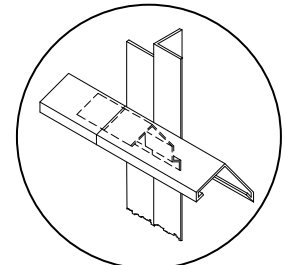
Hinged as walk through door or for swing out access

Sleeved for ductwork connection

### MULLION STYLES

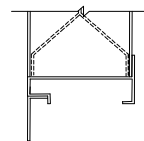


Visible

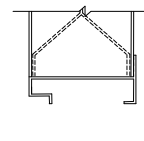


Invisible

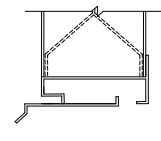
### FRAME STYLES



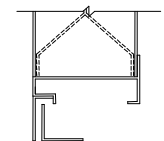
1- Flange (1.5")



2 – Channel

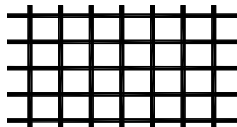


7- Channel with Sill Extension



9 - Flange with Sub Frame

### TYPICAL SCREEN STYLE



Wire Mesh Standard

DATE	ARCHITECT			ENGINEER
PROJECT				
ITEM	QTY	W	H	DESCRIPTION



DEPENDABLE PRODUCTS SINCE 1955

**SAFE-AIR OF ILLINOIS INC.**

Engineering and General Offices

1855 South 54<sup>th</sup> Avenue, Cicero, Illinois 60804

Phone 708-652-9100 FAX 708-652-9158

All free area calculations made in accordance with AMCA standards.

## FREE AREA CALCULATIONS IN SQ. FT.

### WIDTH

Inches	12	18	24	30	36	42	48	54	60	66	72	78	84	90	96	102	108	114	120
<b>12</b>	0.30	0.52	0.74	0.96	1.19	1.41	1.63	1.86	2.08	2.39	2.62	2.84	3.06	3.28	3.51	3.73	3.95	4.18	4.40
<b>18</b>	0.50	0.87	1.24	1.61	1.98	2.36	2.73	3.10	3.47	4.00	4.37	4.74	5.11	5.49	5.86	6.23	6.60	6.97	7.34
<b>24</b>	0.73	1.28	1.82	2.37	2.92	3.46	4.01	4.56	5.10	5.88	6.43	6.97	7.52	8.07	8.61	9.16	9.71	10.25	10.80
<b>30</b>	0.91	1.59	2.27	2.96	3.64	4.32	5.00	5.68	6.37	7.33	8.01	8.70	9.38	10.06	10.74	11.42	12.11	12.79	13.47
<b>36</b>	1.08	1.90	2.71	3.52	4.34	5.15	5.96	6.78	7.59	8.74	9.56	10.37	11.18	12.00	12.81	13.62	14.44	15.25	16.06
<b>42</b>	1.31	2.30	3.28	4.27	5.25	6.23	7.22	8.20	9.19	10.58	11.57	12.55	13.54	14.52	15.50	16.49	17.47	18.46	19.44
<b>48</b>	1.52	2.66	3.80	4.95	6.09	7.23	8.37	9.51	10.65	12.27	13.41	14.55	15.69	16.84	17.98	19.12	20.26	21.40	22.54
<b>54</b>	1.70	2.97	4.24	5.51	6.79	8.06	9.33	10.61	11.88	13.68	14.95	16.23	17.50	18.77	20.04	21.32	22.59	23.86	25.14
<b>60</b>	1.90	3.32	4.74	6.16	7.58	9.01	10.43	11.85	13.27	15.29	16.71	18.13	19.55	20.97	22.39	23.82	25.24	26.66	28.08
<b>66</b>	2.13	3.73	5.32	6.92	8.52	10.11	11.71	13.31	14.90	17.17	18.76	20.36	21.96	23.55	25.15	26.75	28.34	29.94	31.54
<b>72</b>	2.31	4.04	5.77	7.51	9.24	10.97	12.70	14.43	16.17	18.62	20.35	22.08	23.82	25.55	27.28	29.01	30.74	32.48	34.21
<b>78</b>	2.48	4.35	6.21	8.07	9.94	11.80	13.66	15.53	17.39	20.03	21.89	23.76	25.62	27.48	29.35	31.21	33.07	34.94	36.80
<b>84</b>	2.71	4.75	6.78	8.82	10.85	12.88	14.92	16.95	18.99	21.87	23.90	25.94	27.97	30.01	32.04	34.08	36.11	38.14	40.18
<b>90</b>	2.92	5.11	7.30	9.50	11.69	13.88	16.07	18.26	20.45	23.56	25.75	27.94	30.13	32.32	34.52	36.71	38.90	41.09	43.28
<b>96</b>	3.10	5.42	7.74	10.06	12.39	14.71	17.03	19.36	21.68	24.97	27.29	29.61	31.94	34.26	36.58	38.91	41.23	43.55	45.87
<b>102</b>	3.30	5.77	8.24	10.71	13.18	15.66	18.13	20.60	23.07	26.57	29.04	31.52	33.99	36.46	38.93	41.40	43.88	46.35	48.82
<b>108</b>	3.53	6.18	8.82	11.47	14.12	16.76	19.41	22.06	24.70	28.45	31.10	33.75	36.39	39.04	41.69	44.34	46.98	49.63	52.28
<b>114</b>	3.71	6.49	9.27	12.06	14.84	17.62	20.40	23.18	25.97	29.91	32.69	35.47	38.25	41.04	43.82	46.60	49.38	52.16	54.95
<b>120</b>	3.88	6.80	9.71	12.62	15.54	18.45	21.36	24.28	27.19	31.32	34.23	37.14	40.06	42.97	45.88	48.80	51.71	54.62	57.54

HEIGHT