

PENTHOUSES - EXTRUDED ALUMINUM (P-series & M-series)

Design Features – Penthouses may be utilized as an attractive concealment of mechanical equipments and offer excellent air intake or relief while providing protection from outside elements. For storm-driven rain protection, a wind-drain rain louvers may be used.

STANDARD CONSTRUCTION

ALL MATERIAL – EXTRUDED ALUMINUM 6063-T5 (KB-45)

FRAME

.081" thk. extruded aluminum (see frame styles)

BLADES

.081" thk. extruded aluminum, (see blade styles)

ROOF

.063" formed aluminum (5005-H34), undercoated with black tar for anti-condensation

LOUVER AND ROOF SUPPORTS

Aluminum angles designed for (25) psf wind load. Consult Safe-Air/Dowco engineers for heavier loads.

FASTENERS

Plated steel screws

MAXIMUM SIZE

Unlimited, to be shipped in pre-assembled sections

MAXIMUM FACTORY ASSEMBLY SIZE

120"L x 84"W x 84"H

(Type of finish may limit maximum sizes)

MULLION

Invisible

MINIMUM SIZE

12"L x 12"W x 12"H

UNDERSIZED

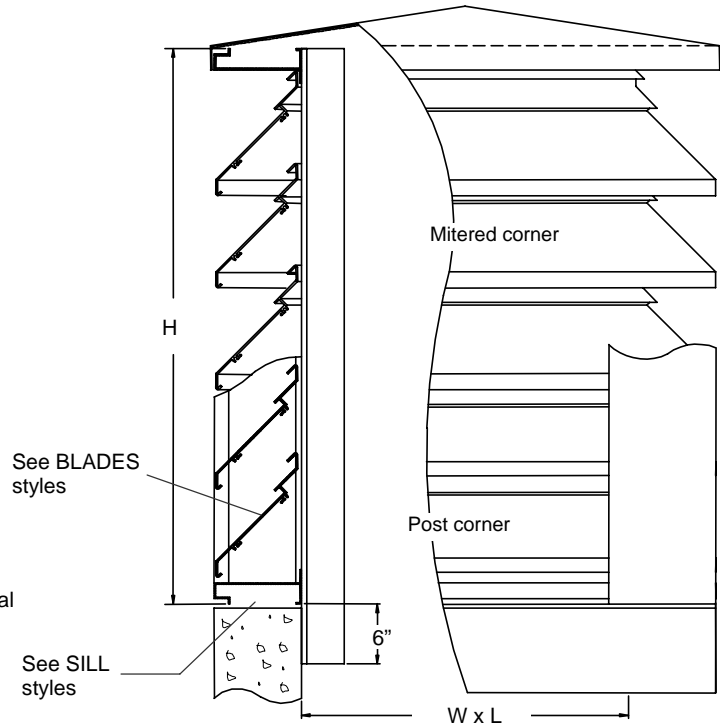
1/4" under ordered size unless specified Exact or Actual

SCREEN

3/4" x .051" expanded aluminum bird screen

FINISH

Mill



VERT. SECT / ELEVATION

OPTIONAL CONSTRUCTION

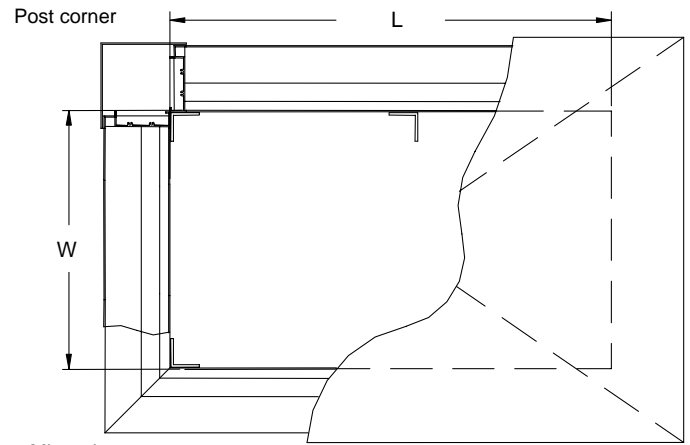
BLADES, FRAME & ROOF - Available in heavier gauge material

SCREEN - Many styles available please consult screen listing

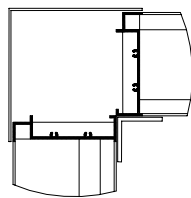
FINISH – Air-dry primer, polyurethane, epoxy, or enamel, baked epoxy or enamel, Kynar, or Powder coat.

MULLION – Visible for architectural preference

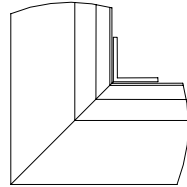
CONSTRUCTION – Fully welded construction



PLAN VIEW



P – series
Post Corners



M – series
Mitered Corners

CORNER STYLES

DATE	ARCHITECT / ENGR				CUSTOMER
PROJECT					
ITEM	QTY	W	L	H	DESCRIPTION



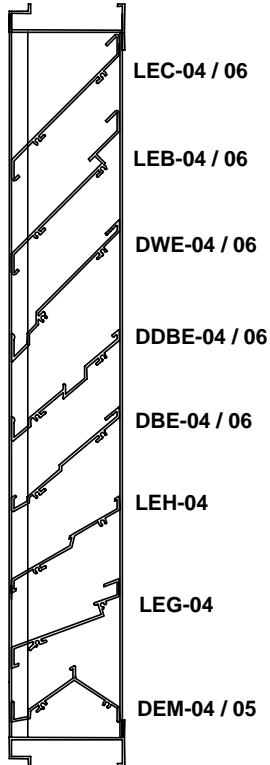
DEPENDABLE PRODUCTS SINCE 1955

SAFE-AIR/DOWCO

Engineering and General Offices

1855 South 54th Avenue, Cicero, Illinois 60804

Phone 708-652-9100 FAX 708-652-9158

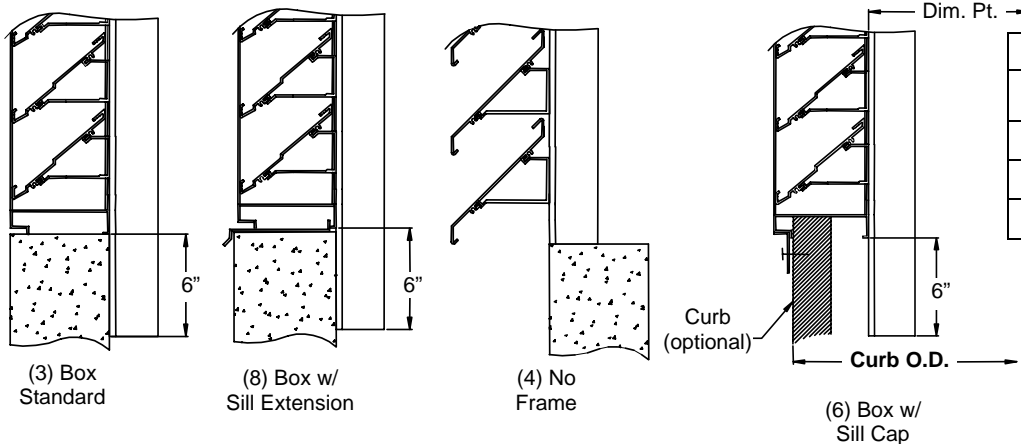


BLADE STYLES

BLADE STYLES							
Model #	Depth	Blade Style	Blade Spacing	Free Area (4' x 4' unit)	Water Penetration (.01 oz. H ₂ O) FPM	Pressure Drop @ 1000 FPM	
LEC-04	4"	Straight @ 45°	4-1/2" oc.	50%	879	.18" wg.	
LEC-06	6"	Straight @ 45°	6-1/2" oc.	56%	906	.15" wg.	
LEB-04	4"	Hooked @ 45°	5" oc.	47%	930	.18" wg.	
LEB-06	6"	Hooked @ 45°	6-1/2" oc.	54%	852	.16" wg.	
DWE-04	4"	Drainable @ 45°	4-1/2" oc.	52%	910	.17" wg.	
DWE-06	6"	Drainable @ 45°	6-1/2" oc.	55%	939	.17" wg.	
DDBE-04	4"	Dual drain @ 40°	3-1/2" oc.	53%	1051	.12" wg.	
DDBE-06	6"	Dual drain @ 35°	5" oc.	52%	1243	.13" wg.	
DBE-04	4"	Drainable @ 40°	3-1/2" oc.	60%	1016	.12" wg.	
DBE-06	6"	Drainable @ 35°	4-3/4" oc.	63%	970	.12" wg.	
LEH-04	4"	Hooked @ 30°	3" oc.	63%	713	.16" wg.	
LEG-04	4"	Hooked @ 20°	2-1/2" oc.	52%	690	.17" wg.	
DEM-04	4"	Drain / sight proof	2" oc.	55%	1100	.27" wg.	
DEM-05	5"	Drain / sight proof	2" oc.	57%	1121	.27" wg.	

Notes:

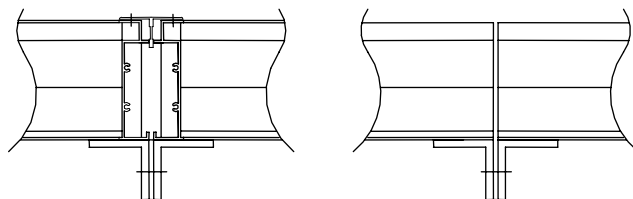
- Above performances are based on 4' x 4' unit, smaller sizes have less free areas than larger sizes.
- Wind-driven rain louvers may be used for storm-driven rain protection. Consult factory for more information.
- Any type of louver blades not shown above can be used as penthouses, i.e. adjustable louvers, combination louvers, or vertical blade configuration. Consult factory for availability.
- Back-draft dampers, control dampers, motorized/non-motorized can be installed in the throat of penthouses or roof curbs.
- Removable roof or insulated roof is available as an option.
- Roof curbs are available as option (see roof curbs section)
- Drainable louvers are best recommended with post corners and visible mullion to prevent water from cascading.



SILL FRAME STYLE

ROOF CURBS	
LOUVER DEPTH	CURB – O.D. ACTUAL
4"	Dim. Pt. + 6"
5"	Dim. Pt. + 8"
6"	Dim. Pt. + 10"

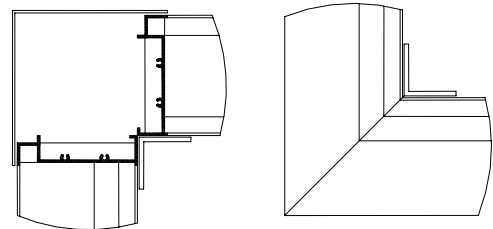
Note:
Curb thickness shall be no more than 3" thick to fit inside the bottom frame.



Visible Mullion (recommended for drainables)

Invisible Mullion Standard

MULLION STYLE



P – series Post Corners

M – series Mitered Corners

CORNER STYLES